

Smart-X Software Solutions
SecReport Enterprise User Guide

ver. 1.5.9.2 (March 2012)

Table of Contents:

WELCOME.....	3
FEATURES AND CAPABILITIES.....	4
SETTING UP SECREPORT ENTERPRISE.....	5
INSTALLATION PACKAGE CONTENTS AND SETUP PREREQUISITES.....	6
INSTALLATION PACKAGE CONTENTS	6
REQUIREMENTS	7
INSTALLATION.....	9
INSTALLING SECREPORT ENTERPRISE CONSOLE	9
INSTALLING SECREPORT ENTERPRISE WEB SERVICE.....	11
WEB SERVICE PREREQUISITE CHECKLIST (WINDOWS 2000/ 2003)	12
WEB SERVICE PREREQUISITE CHECKLIST (WINDOWS SERVER 2008/R2).....	14
WEB SERVICE INSTALLATION PROCEDURE	15
LICENSING.....	21
WORKING WITH SECREPORT ENTERPRISE	22
THE CONSOLE USER INTERFACE	23
CREATING A REPORT.....	24
USING THE FILTER OPTION	27
REPORT SETTINGS TOOLBAR	29
REPORT DISPLAY	31
MODIFYING THE REPORT RESULTS VIEW	34
REPORT DISPLAY TOOLBAR.....	35
EXPORTING REPORTS.....	37
REPORTS HISTORY	39
REPORT HISTORY TOOL BAR	40
REPORTS HISTORY OPTIONS	42
COMPARING REPORTS	43
AUTOMATING REPORTS USING THE WEB SERVICE COMPONENT.....	44
WEB SERVICE CONFIGURATION	44
HOW TO CUSTOMIZE THE WEB REPORT LOGO.....	46
AUTOMATIC GENERATION SETTINGS	47
VIEWING AUTOMATIC REPORTS	50
TROUBLESHOOTING WEB SERVICE AVAILABILITY	53

Welcome

Thank you for choosing SecReport Enterprise, an essential file system security reporting solution that allows IT and InfoSec professionals to gain an unprecedented level of control over the overgrowing file system access lists, including the ability to track changes, prepare for information security audits and investigate security incidents in a rapid and efficient manner.

This document will guide you throughout the installation and initial setup processes. The functionality of SecReport Enterprise Console and Web Services will also be described in detail.

For more information about the SecReport suite and other Smart-X products, please visit our website at: www.Smart-X.com.

Features and Capabilities

Here are some of the features of SecReport:

- Generates ACL Reports for local file systems and network shares.
- Provides human-readable reports that allow for easy identification of users and groups that have various levels of access to file system assets on your network.
- Provides periodic security reports that comply with SOX standards.
- Gives you a clue who and what data can actually be accessed on your public folders.
- Generates NTFS permission reports from the context menu.
- Exports the report in a variety of formats (PDF, CSV, RTF, HTML, Etc.)

- *Automatically sends Folder Permissions reports to managers with-in the organization.**
- *Compares reports to see permissions differences.**
- *Allows for scheduling of automated reports.**

* - Not available in the Light version

Setting up SecReport Enterprise

This chapter provides installation and configuration instructions for components needed to run SecReport in your environment.

Installation Package Contents and Setup Prerequisites

Installation Package Contents

The installation package contains two Windows Installer (MSI) files:

I – SecReport Enterprise Console

This is a mandatory component. The SecReport Enterprise console allows you to configure the system, generate reports, compare reports and view previously generated reports.

This component is typically installed on the System Administrator's workstation. For scanning large volumes of data, it is highly recommended to use the 64-bit version of the console.

II – SecReport Enterprise Web Service

This is an optional component that adds automation and scheduling capabilities to SecReport Console and in no way replaces the functionality of the Console. The SecReport Enterprise Web Service component allows you to automatically generate reports and send them to managers within the organization.

This component should be installed on a Windows 2003/2008 32-bit or 64-bit server with IIS.

If you are planning to use the Web Service component, it is recommended to install this component first and then proceed with

Requirements

The machine on which you install the component must be a member of an Active Directory domain.

SecReport Enterprise Console:

- Windows 2000 / XP / 2003 / 2008 / Windows 7 / 2008 R2 (32 or 64-bit).
- .NET Framework 3.5 SP1 or higher.

SecReport Enterprise Web Service:

SecReport Enterprise Web Service is supported on Windows 2003, Windows 2008 or Windows Server 2008 R2 (32 or 64-bit) servers.

Prerequisites for Windows 2003 (32 or 64-bit) server:

- Windows Server 2003 with Service Pack 2 or higher
- IIS 6 with ASP.NET
- .Net Framework 3.5 SP1 or higher installed and registered with IIS

Prerequisites for Windows 2008 / R2 server:

- Windows 2008 Server with SP1 or later
 - **Important Note:**
It is very important to perform a full Windows Update prior to the installation of SecReport and after all roles and features are installed.

- Server Features:
 - .Net Framework 3.5
 - Once the server is updated, you should see "Microsoft .NET Framework 3.5 SP1" in the Programs and Features Control Panel. If you do not see this entry do not continue with the installation and make sure you download and install .Net Framework 3.5 SP1 (or higher)

- Server Roles:
 - Web Server (IIS) with the following role features:
 - Application Development :
 - ASP.NET
 - .NET Extensibility
 - ISAPI Extensions
 - ISAPI Filters
 - Security :
 - Basic Authentication
 - Windows Authentication
 - Management Tools:
 - IIS 6 Management Compatibility

Installation

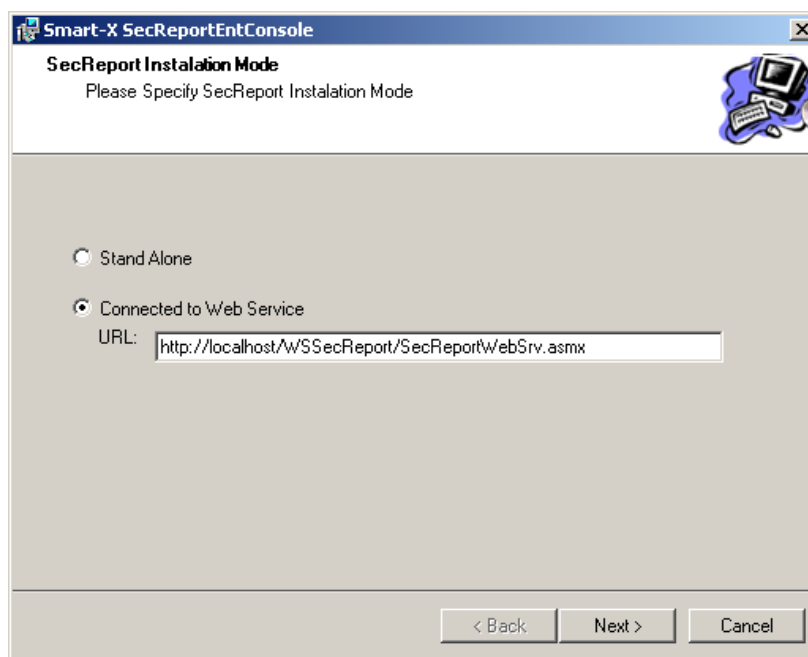
If you want to use the schedule and automate your permission reports, you should install the SecReport Web Service component on an IIS (web) server in your environment. If you choose to install this component, it is recommended that you install it before you install the Console.

If you only want to use SecReport Enterprise Console without automation and scheduling capabilities, please ensure your workstation meets the prerequisites and proceed with the Console installation only.

Installing SecReport Enterprise Console

To install SecReport Enterprise console from a downloaded file:

1. Double click the console installation file.
2. Read the program license conditions carefully.
3. Follow the Setup program instructions displayed on the screen until you reach the 'SecReport Installation Mode'.



- If you previously installed the Web Service then choose 'Connected to Web Service'.
 - If you did not install the Web Service, choose 'Standalone'.
4. Complete the installation and click on 'Close'.
 5. A SecReport Enterprise Console desktop icon will be placed on the desktop and in the start menu. In addition, a new command called '**Scan with SmartX SecReport Enterprise**' will be added to the shell context menu.

Note: If you are not planning to install SecReport Web Service component, you can skip to the “Working with SecReport Enterprise” chapter.

Installing SecReport Enterprise Web Service

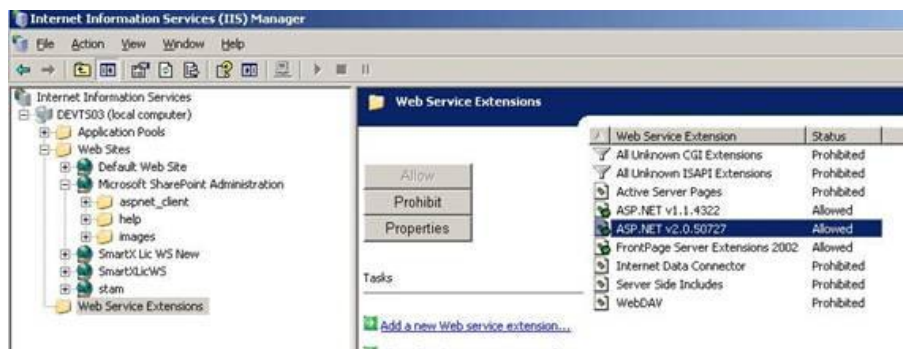
Web Service Installation Prerequisites

1. During the Web Service installation process you will be asked to provide the following information:
 - A directory which will store the security reports (Reports Directory).
 - i) This directory can be either a local directory or a network directory.
 - ii) The reports are stored as compressed files. Estimated file size for a large report (with 50,000 entries) is approximately 3MB.
 - Credentials of the user account that will be used to run the Web Service.
 - i) The user should be a member of the following local group on the Web Server:
 - (a) On Windows 2003 server – IIS_WPG
 - (b) On Windows 2008 server – IIS_USRS
 - ii) The user should have Read / Write permissions for the Reports Directory (as described above in this section)

Web Service prerequisite checklist (Windows 2000/ 2003)

1. Step 1 - Verify that IIS is installed
 - a. Launch Add /Remove Programs.
Start → Run → appwiz.cpl
 - b. On the left pane, click on 'Add/Remove Windows Components'
A 'Please Wait...' message appears.
 - c. Double Click 'Application Server'
 - d. Verify that the following items are selected. If any of these items is not selected, check it.
 - i. Internet Information Services (IIS) → Common Files
 - ii. Internet Information Services (IIS) → FrontPage 2002 Server Extensions
 - iii. Internet Information Services (IIS) → Internet Information Services Manager
 - iv. Internet Information Services (IIS) → World Wide Web → World Wide Web Service
 - v. Enable Network COM+ Access
 - vi. ASP.NET
 - e. Click OK, Click next and continue with the wizard.
2. Step 2 – Verify that Microsoft .Net Framework is installed
 - a. Launch Add /Remove Programs.
Start → Run → appwiz.cpl
 - b. On the left pane, click on 'Change or Remove Programs'
 - c. Select the 'Show Updates' checkbox
(Might take a while to complete...)
 - d. Browse the list to find 'Microsoft .NET Framework 2.0 Service Pack 2'
If you cannot find this item, you should install .Net FX 2.0 SP 2 from the following link:
<http://www.microsoft.com/downloads/details.aspx?familyid=5B2C0358-915B-4EB5-9B1D-10E506DA9D0F&displaylang=en>
3. Step 3 – Verify that your machine is up-to-date.

- a. Launch Windows Update Manager
Start → Run → wupdmgr
- or -
Browse to
<http://www.microsoft.com/downloads/details.aspx?familyid=5B2C0358-915B-4EB5-9B1D-10E506DA9D0F&displaylang=en>
 - b. Follow the on-screen instructions to perform a full update of your operating system.
4. Step 4 – Verify that ASP.NET 2.0 is registered with IIS
- a. Launch IIS Management Console
Start → Run → inetmgr
 - b. On the left pane, <local computer> → 'Web Service Extensions'
 - c. On the right pane, Verify that ASP.NET v2.0.50727 is 'Allowed'.



If the entry exists but is 'Prohibited', click on it and then click on the 'Allow' button. If the entry does not exist (commonly happens when IIS is installed after the .NET framework is installed), you should re-register ASP.NET with IIS. To do that, run **%WINDIR%\Microsoft.NET\Framework\v2.0.50727\Aspnet_regiis.exe** with **-i** switch ([http://technet.microsoft.com/en-us/library/cc757148\(WS.10\).aspx](http://technet.microsoft.com/en-us/library/cc757148(WS.10).aspx))

Web Service prerequisite checklist (Windows Server 2008/R2)

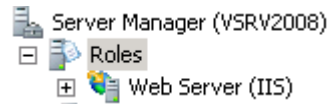
1. Step 1 – Perform full windows update and install all important updates.

2. Step 2 - Verify that IIS is installed

a. Launch Server Manager:

Start → Run → servermanager.msc

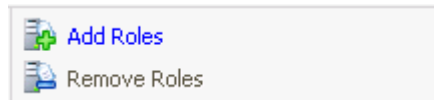
b. On the left pane, expand 'Roles'



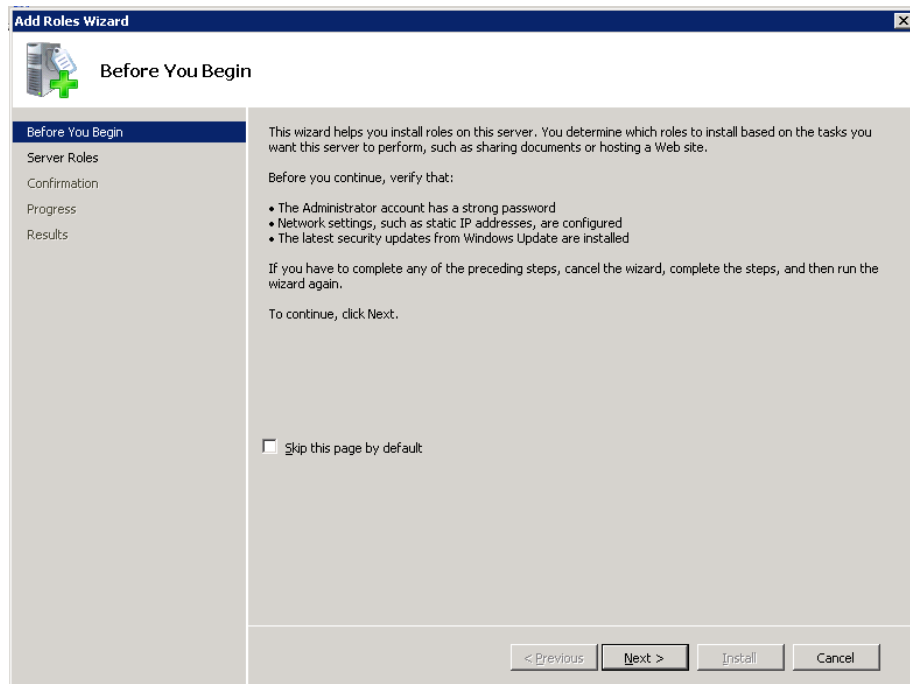
If 'Web Server' exists, skip to step 3. If not, continue.

c. Click on 'Roles'

d. On the left pane, click on 'Add Role'



e. If the 'Before you begin' page is shown, click 'Next'

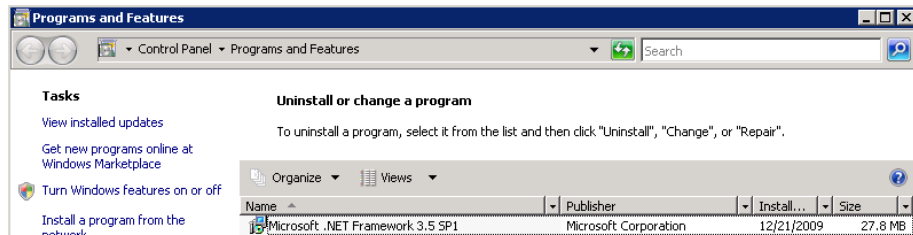


f. Perform full Windows Update and make sure all important updates are installed.

3. Step 3 – Install .Net Framework 3.5 SP1 (Windows Server 2008).

a. Start → Run → appwiz.cpl

Verify that 'Microsoft .NET Framework 3.5 SP1' exists on the list.



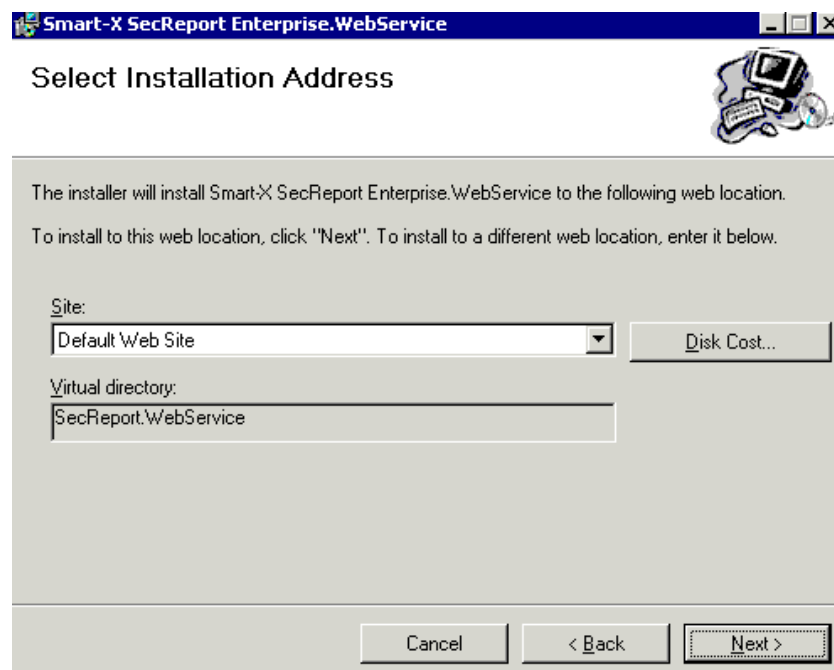
If it doesn't, download it [HERE](#) and install it.

(Note: For Windows Server 2008 R2, .Net Framework is a server feature and can be added using the "Turn Windows features on or off" option.)

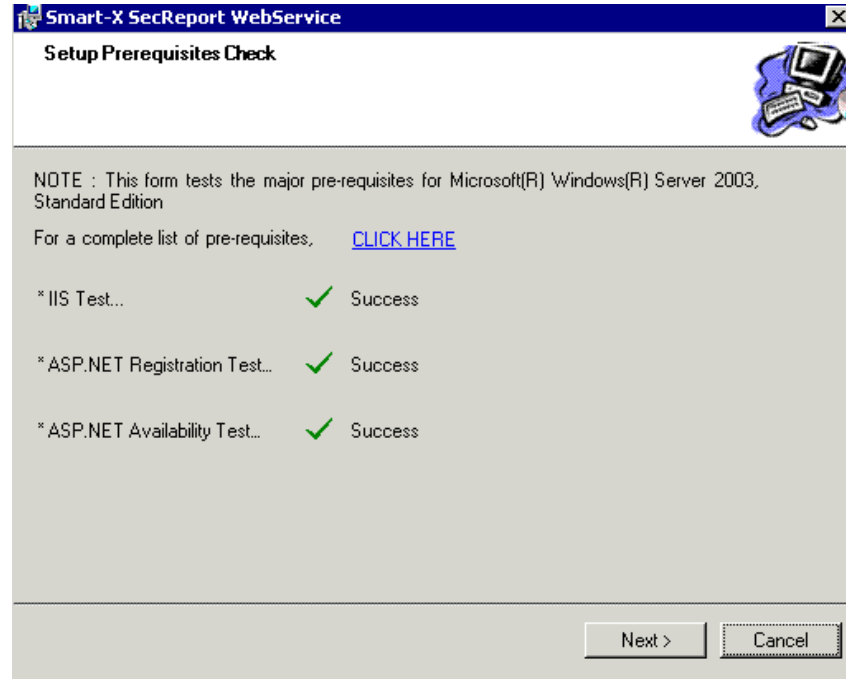
- b. Reboot the server if needed.

Web Service Installation Procedure

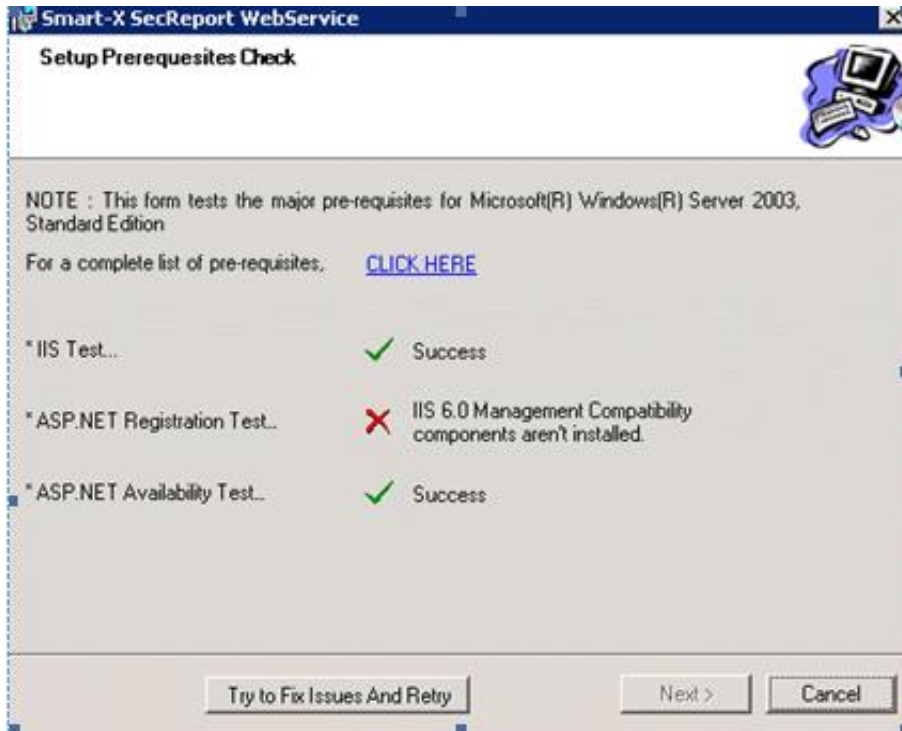
1. Double click the Web Service installation file.
2. Read the program license conditions carefully.
3. Follow the Setup Program instructions displayed on the screen until you reach the 'Select Installation Address' window:



- Choose the required Web Site.
 - Click on 'Next' to confirm the installation.
4. The Installation Wizard will verify that all prerequisites are met (see prerequisites chapter). At the end of this process click on 'Next'.



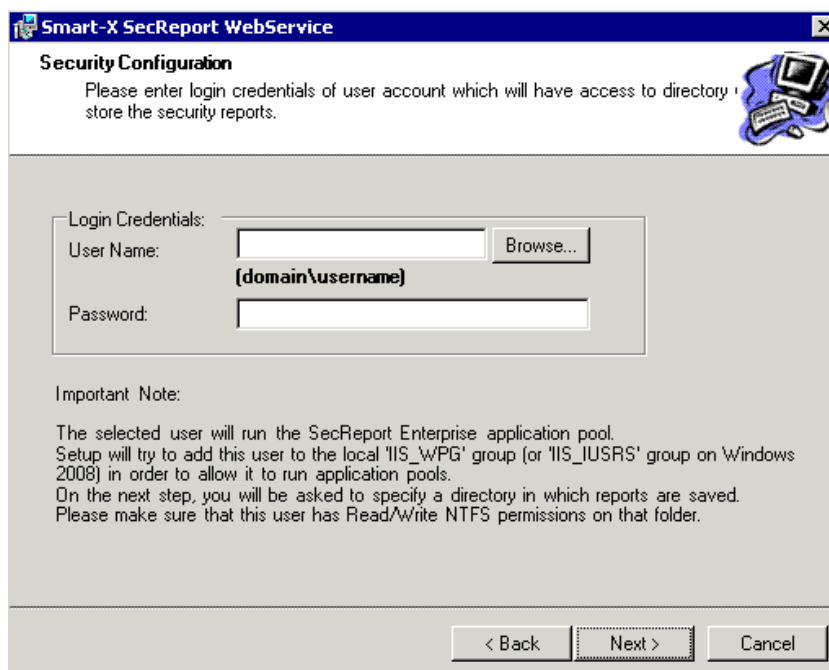
If the Wizard identifies a problem, a new button will appear which allows you to try to repair it.



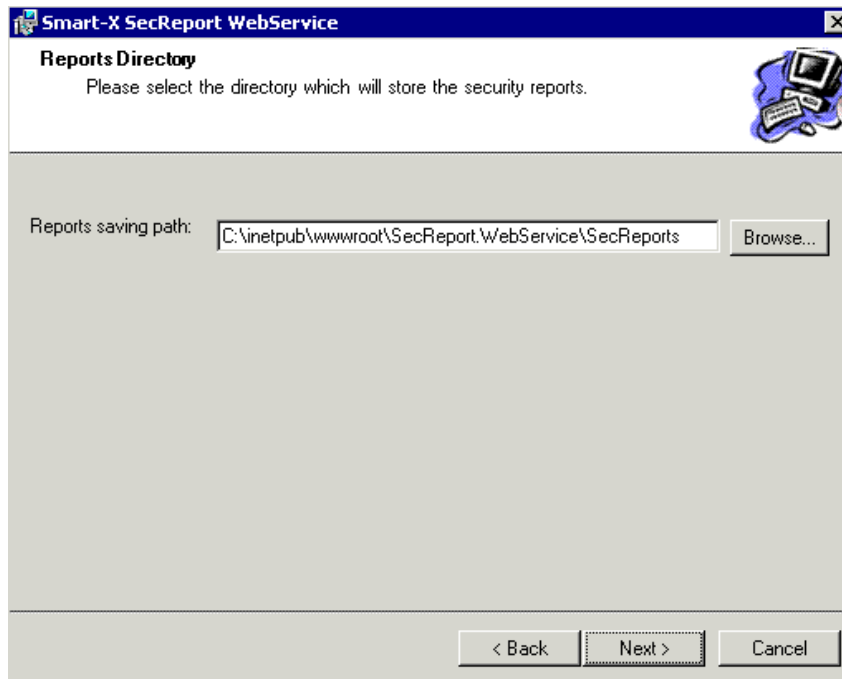
Left button -> Try to Repair Problem and Retry

Click the 'Try to Fix issues and Retry' button. If this does not help, click on the 'Click here' link to go to the Prerequisites List.

In the 'Security Configuration' window:

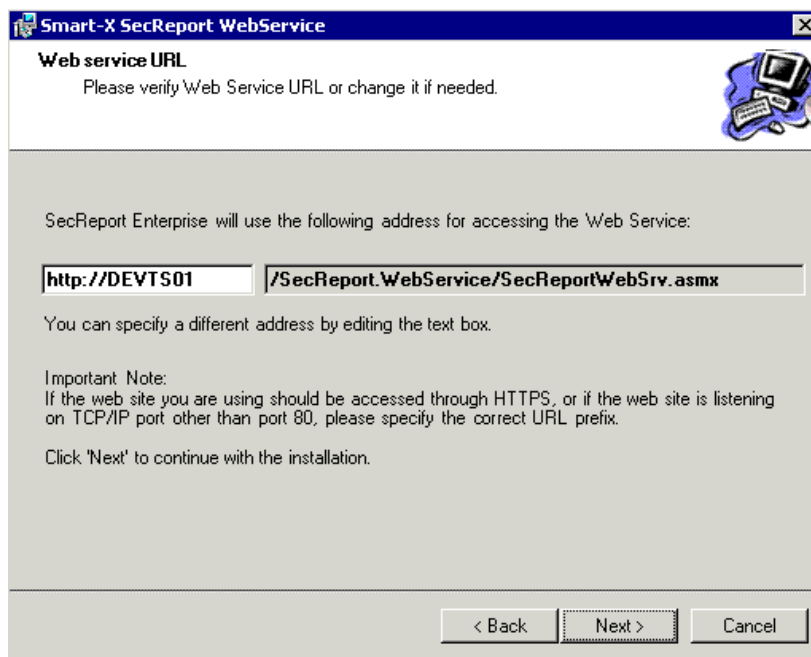


- 'Reports Directory' stage: browse to choose the folder to which reports will automatically be saved.



- Please review paragraph 1 of the chapter 'Web Service Installation Prerequisites' 1 for more information.

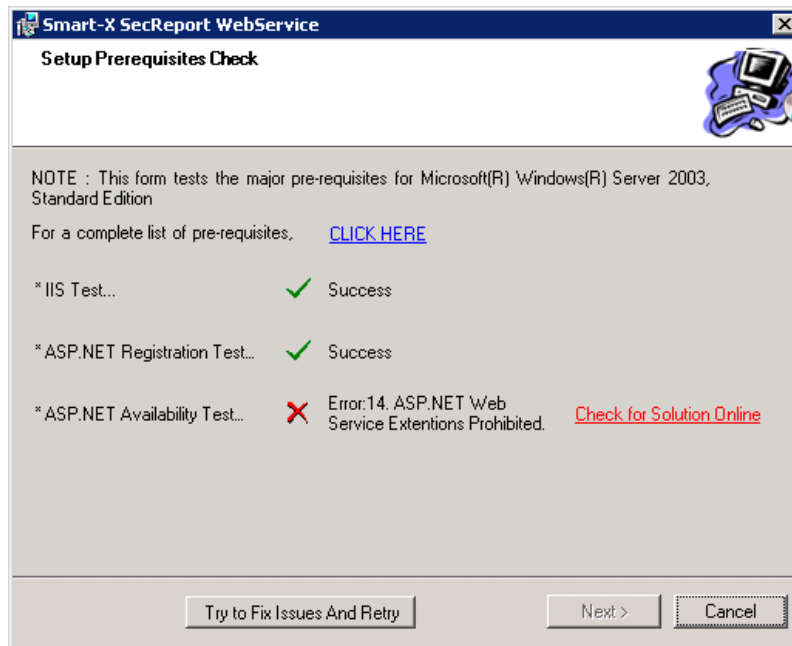
2. 'Web Service URL' stage:



- Check to see if the displayed URL matches your organization specifications and change the beginning if necessary.

5. Post Setup Verifications:

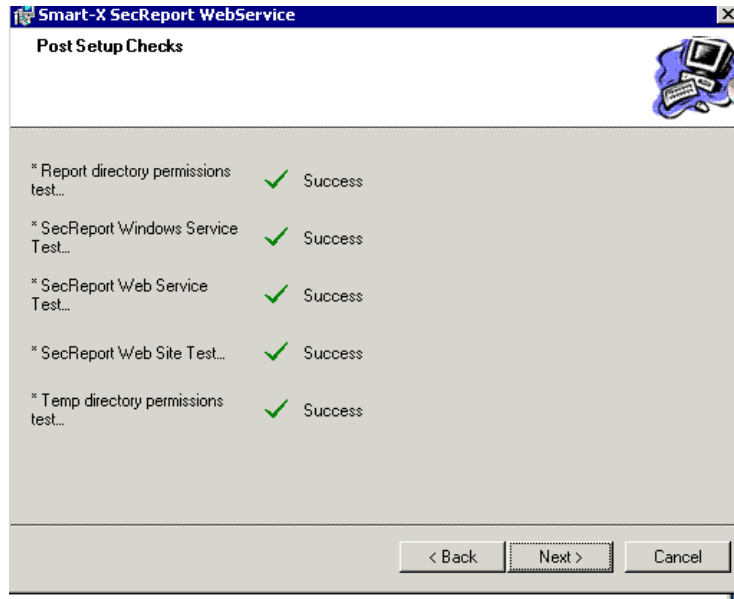
Upon completion of the installation the Wizard verifies that the SecReport Web Service is up and running. If one of the tests fails, an appropriate message will appear.



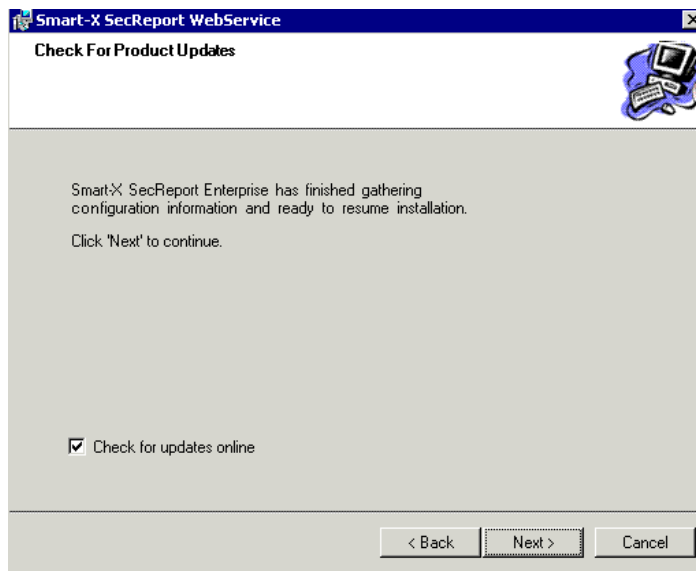
At this stage you have the following options:

- You may click the link that will lead you to a full Prerequisites List.
- If an error appears you may:
 - i) Check for solution online – clicking on this link will open a web page with a description of the error and solution options.
 - ii) Click on the "Try to Fix Issues and Retry" button to let SecReport Enterprise try to repair the problem.

- If all tests are tagged as 'Success', click on 'Next'.



6. At the 'Check for Product Updates' stage, click on 'Next' to run an online check. The online check will see if a new release of the product is available and if so, will allow you to download it to your PC.



Click on 'Next' to complete the installation and then on 'Close'.

Licensing

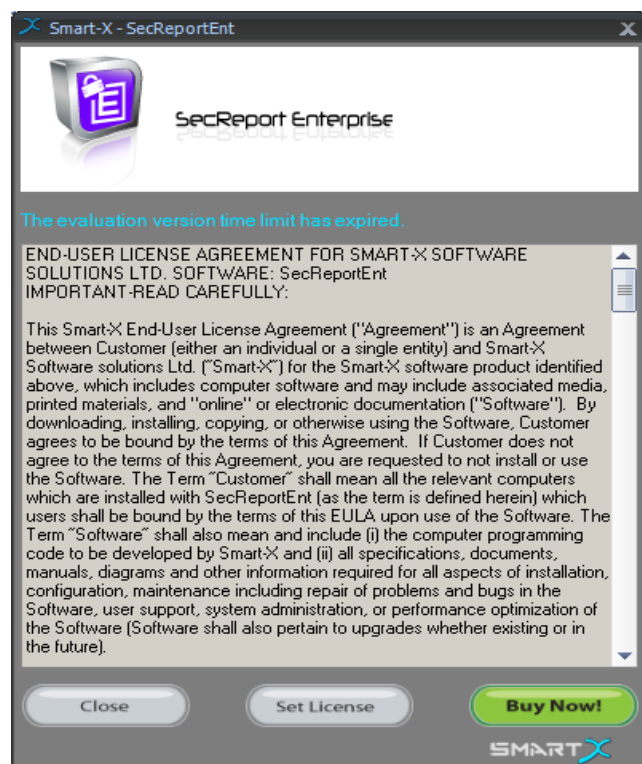
The product you have downloaded to your PC is an evaluation version.

The SecReport Enterprise evaluation version has limited functionality and time (detailed in the EULA). The evaluation version is limited to 30 days and 250 entries per report.

SecReport Enterprise is licensed per site therefore a single license should be purchased in order to run the program.

When you double click on the application, you will see a license window from which you can open either the program or the set license file.

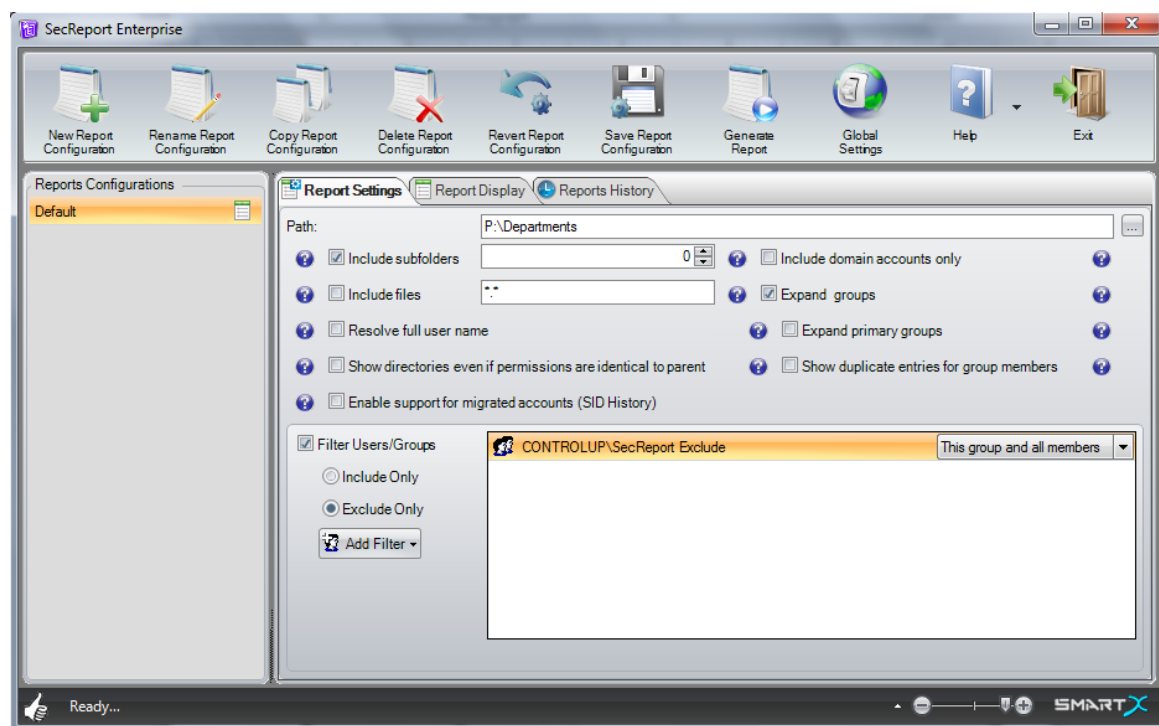
6. If you choose the '**Set License**' option, browse to choose the license file, and complete the process.
7. Pressing on '**Continue**' will run the application.
8. If you press on '**Buy Now**' you will be directed to the SecReport Enterprise web page on the Smart-X website, where you may purchase the tool.



Working with SecReport Enterprise

This chapter provides detailed descriptions of the Console User Interface and instructions for performing report configurations and management using SecReport.

The Console User Interface



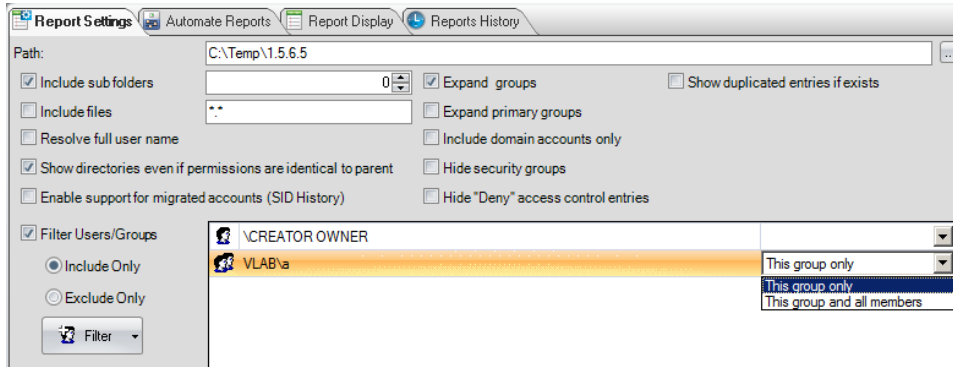
The Console is divided into two sections:

- **Reports Configurations** – on the left side of the console.
The list displays the different configurations you created and allows you to manage them – rename, copy, etc.
- **Management Tabs** – on the right side of the console.
Allow you to do the following:
 - **Report Settings** – set report's configurations.
 - **Report Display** – view reports' results
 - **Reports History** – view old reports and compare permissions reports.
 - **Automate Reports** – set automatic generation and distribution of reports (this tab will appear only after installation of the webservice.msi file which is in charge of the automation of the reports and only for the SecReport Enterprise version)

Creating a Report

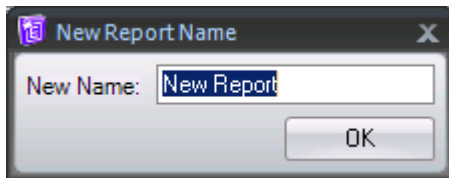
To create a new report, follow these instructions:

1. Click on the 'Report Settings' tab.



2. Click on  'New Report'.

3. Type the report's name in the following window:





4. Configure the following reporting options as needed:

Field Name	Functionality
Path	Browse or type the path to the folder for which you want to produce a report
Include Subfolders	Define whether the report will run recursively on subfolders under the root directory or solely on the root folder. A value of 0 means the whole depth of the directory structure will be traversed, otherwise the numerical value designates the number of folders to traverse in depth.
Include Files	<p>Define whether the report will display security information for existing files in the selected directory. The value defines a wildcard for file filtering (e.g. *.* for all files)</p> <p>Note that generating a report using this feature will take much longer and will significantly increase report size</p>
Resolve Full User Name	<p>Define whether the report will query Active Directory and display the full user name or only the account name (sAMAccountName).</p> <p>Note that this setting will increase report generation time</p>
Show directories even if permissions are identical to parent	<p>By default, SecReport will bypass subfolders whose parent folder has identical permissions. When this checkbox is checked, SecReport will show all subfolder permissions even if they are inherited and identical to its parent folder.</p> <p>Note that this option will significantly increase report size and make it less legible.</p>


Field Name	Functionality
Enable support for migrated accounts	<p>When this option is selected, SecReport will try to resolve SIDs of accounts which were previously migrated from other domains.</p> <p>Use this feature if you have account which were migrated from other domains with SIDHistory.</p>
Include domain accounts only	<p>Select this option to display Active Directory domain accounts only, while omitting local machine accounts.</p>
Expand Groups	<p>SecReport will display all group members for each group-assigned security entry.</p> <p>Note that this setting will increase report generation time and report size</p>
Expand Primary Groups	<p>Define whether the report will display detailed security information for expanded Active Directory primary group (usually 'Domain Users' group).</p> <p>Note that this setting will significantly increase report size</p>
Show duplicate entries for group members	<p>If a given user is a member of several groups, a separate report entry will be displayed for every group membership instance. If not selected, one entry will be displayed per user (not including permissions granted explicitly to the user)</p>
Hide security groups	<p>When selected only individual users' permissions will be displayed in the report, while ignoring group entries. Please note that group members will still be displayed, if the "Expand Groups" option is selected.</p>
Hide "Deny" access control entries	<p>When selected, "Deny" permissions will not be displayed in the report.</p>
Display report settings on first/last page	<p>When selected, a summary of the above options will be prepended/appended to the report output.</p>

Field Name	Functionality
Filter Users/ Groups	Choose the users / groups that will be included / excluded from the report. Read more on “Using the Filter option” below

5. Click on  'Save Configurations' to save settings for future use.

6. Click on  'Generate Report'.
The generated report will appear on the 'Report Display' Tab

7. Now the console will open the 'Report Display' tab on which you will see the permissions report itself.

8. Click on  'Save Report' to add report to archive and enable comparison with future reports.

Using the Filter option

The filter option allows you to exclude or include specific users/groups from your report.

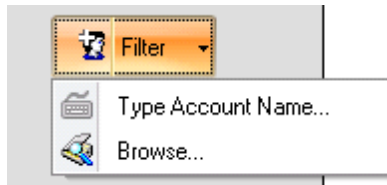
Selecting a group/user to filter:

1. Select the 'Filter users/groups' option.

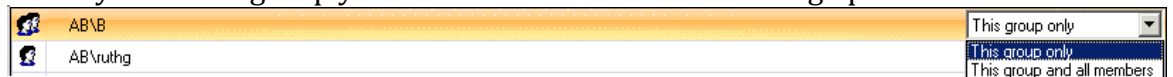
2. Click on 'Include only' in order to include only the groups and users you select in the report.

Or 'Exclude only' in order to remove the groups and users you select from the report.

3. Click on 'Filter' to select the group or user you want.



4. When you filter a group you can choose one of the following options:



a. **This group only**

will filter the group's permissions only (will not include permissions of its members).

b. **This group and all members**

will filter permissions of the selected group and also permissions of the group's members.

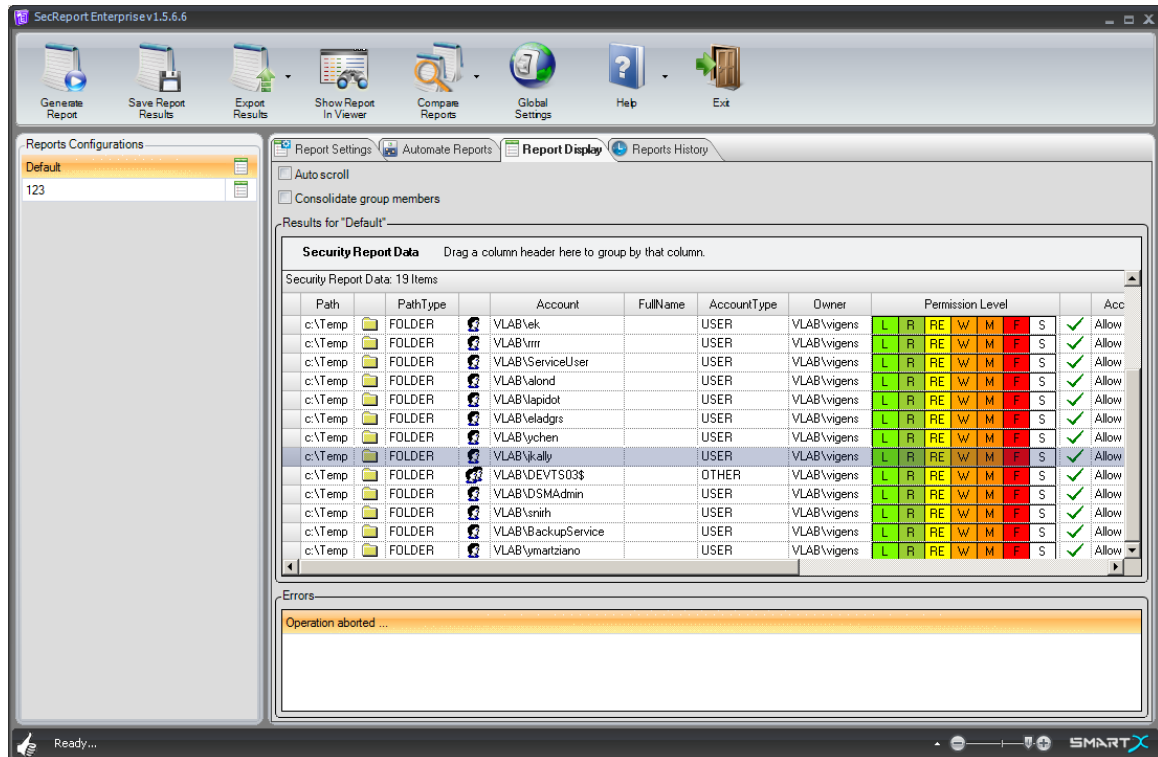
Report settings toolbar

The following icons are available for use when the 'Report Settings' tab is selected.

Icon	Name	Functionality
	New Report	Adds a new report configurations set.
	Rename report configuration	Allows you to rename the chosen report's configurations set.
	Copy report's configuration	When clicked it duplicates the report's configuration to a new set.
	Delete	Delete's the chosen report's configurations set (Pay attention – this will also deletes the archived reports of this configurations set.)
	Revert report configuration	Displays the report's configurations last saved.
	Save report configuration	Saves the report's configuration set for future use.

Icon	Name	Functionality
	Generate report	Generates the report and displays it in the 'Report Display' tab.
	Global Settings	Opens SMTP configuration window
	Help	Opens a sub-menu with the following commands:
	Online Help	Opens the Online User Guide
	About	Opens a window with registration information and a 'Set License' button
	Legal Info	Opens the legal info (EULA or the terms of purchase)
	Check for New Version	Checks for new releases
	Exit	Closes the console

Report Display



The 'Report Display' tab presents report results. Here you can do the following:

- Define result options:

Field Name	Functionality	Remarks
Consolidate Group Members	Groups group members together.	
Auto Scroll	When this checkbox is selected, the permission report will automatically be scrolled with every new entry. If you want to review the report as it is generated, it is best to leave this checkbox clear.	

- Sort information in various ways:
 - Drag and Drop: to group the displayed information according to one of the columns, drag the column to the 'Security Report Data' area.
 - Filter: click on a column to open a sub-menu which gives you various filter options.

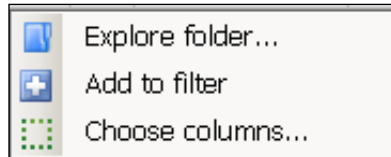
Report columns explanation

Column name	Explanation
Path	Displays the path to the folder / file presented in the current entry
File / Folder	Displays an icon to graphically indicate the path type - file or folder
Path Type	Displays the path type - file or folder
User / Group	Graphically displays the account type - user or group
Account	Displays the account
Full Name	Displays the group or user's full name from the Active Directory
Account Type	Display one of three account types: User, Group or Other.
Owner	Displays the file or folder's owner
Permissions Type	Displays a V sign for an 'Allow' permission type or a __ sign for a 'Deny' permission type
Access Type	Displays Allow or Deny for the permission type.
Permission	Displays the permission for the specific file or folder

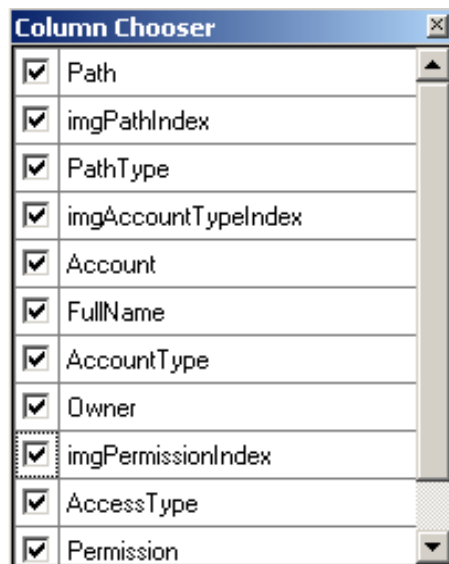
Column name	Explanation
Apply To	Displays the permission scope
From Group	Displays the group from which the permission is inherited. Available when the report uses the 'Expand Groups' option (in the 'Report settings' tab)
Permission Level	Displays a graphical indication for the permission level: L – List R – Read RE – Read & Execute W – Write F – Full Control S - Special

Modifying the report results view

When you right click the results the following submenu will open:









- Explore folder – opens the actual folder for you to explore.
- Add to filter – adds the user/group to the filter in the 'Report Settings' tab.
- Choose columns – opens a list of the columns for you to choose from. the configuration will be automatically saved for future reports.





Report Display toolbar

Icon	Name	Functionality
	Stop generation / Generate report	Allows to stop the report generation and start it over again.
	Save results	Saves the report results to archive for future analysis.
	Export results	Opens a sub menu with the option to export the results to excel or as a CSV file
	Show in viewer	Allows you to open the report results in the SecReport viewer in order to view the results separated to parts and export the results separately.
	Compare to...	Opens the list of dates which is the report was generated. allows you to choose a date for comparison to see added and removed permissions.
	Global Settings	Opens SMTP configuration window

Icon	Name	Functionality
	Help	Opens a sub-menu with the following commands:
	Online Help	Opens the Online User Guide
	About	Opens a window with registration information and a 'Set License' button
	Legal Info	Opens the legal info (EULA or the terms of purchase)
	Check for New Version	Checks for new releases
	Exit	Closes the console

Exporting Reports



1. Click on 'Export Report' and choose one of the two options:
2.  - Export to Excel will export the report as a whole file to Excel while preserving any grouping and sorting option you have configured.
3.  - Export to CSV will export the report as a whole file as a CSV flat file. this allows you to open the report with Excel, Notepad or other applications.


You may also export parts of the report using the SecReport viewer (see next chapter).

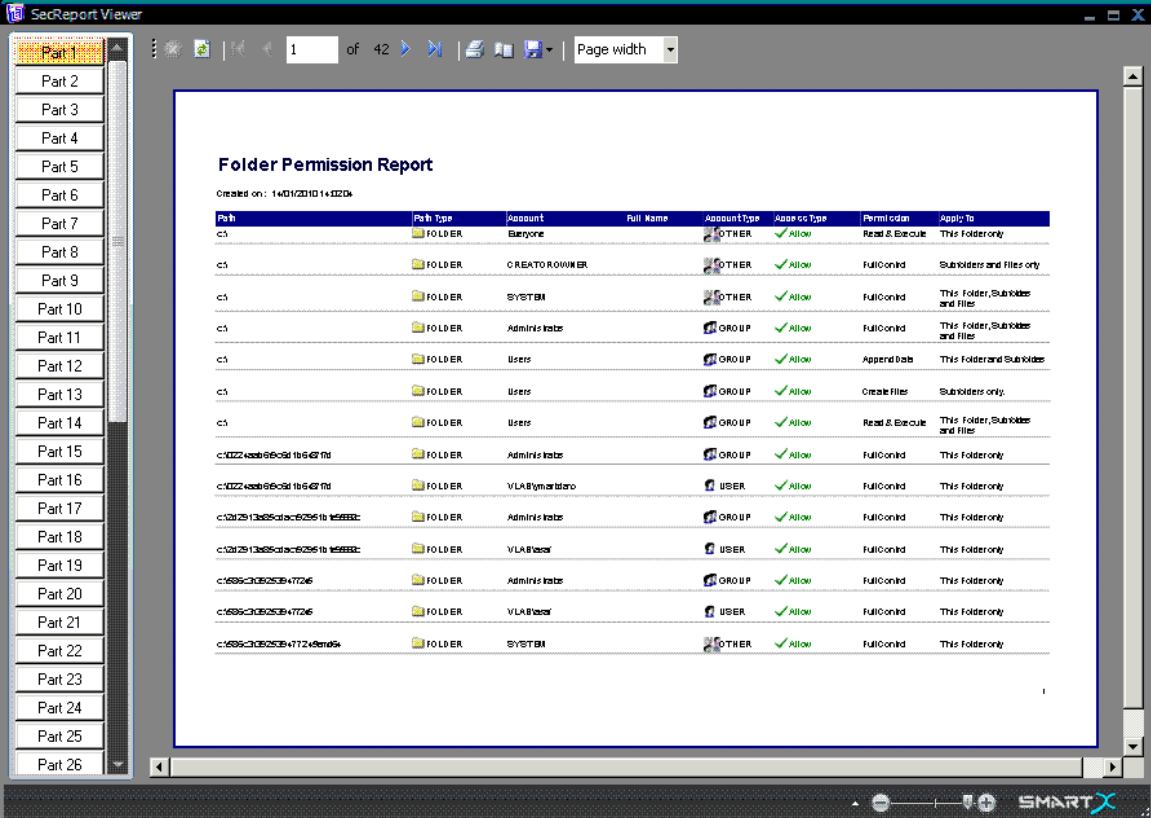
Using Report Viewer

The SecReport enterprise also allows you to open the report results in a viewer. The viewer separates big reports into parts in order to avoid confusion caused from large reports.

Each part can be saved separately in various formats: PDF, HTML, XLS etc.

In order to display a report in the viewer:

1. Click on  'Show in viewer' .
2. The SecReport viewer will open displaying the report according to the sort and grouping you defined in the report display tab.



The screenshot shows the SecReport Viewer interface. On the left, there is a vertical sidebar with buttons labeled 'Part 1' through 'Part 26'. The main window displays a 'Folder Permission Report' with the following table:

Path	Path Type	Account	Full Name	Account Type	Access Type	Permission	Apply To
c:\	FOLDER	Everyone		OTHER	Allow	Read & Execute	This folder only
c:\	FOLDER	CREATOR OWNER		OTHER	Allow	FullControl	Subfolders and files only
c:\	FOLDER	SYSTEM		OTHER	Allow	FullControl	This folder, Subfolders and files
c:\	FOLDER	Administrators		GROUP	Allow	FullControl	This folder, Subfolders and files
c:\	FOLDER	Users		GROUP	Allow	AppendData	This folder and Subfolders
c:\	FOLDER	Users		GROUP	Allow	Create Files	Subfolders only
c:\	FOLDER	Users		GROUP	Allow	Read & Execute	This folder, Subfolders and files
c:\022eeb96c9d1b54276	FOLDER	Administrators		GROUP	Allow	FullControl	This folder only
c:\022eeb96c9d1b54276	FOLDER	VLA\ymalboro		USER	Allow	FullControl	This folder only
c:\242913d85c1ac62951b1e588c2	FOLDER	Administrators		GROUP	Allow	FullControl	This folder only
c:\242913d85c1ac62951b1e588c2	FOLDER	VLA\veer		USER	Allow	FullControl	This folder only
c:\689c30e25b47726	FOLDER	Administrators		GROUP	Allow	FullControl	This folder only
c:\689c30e25b47726	FOLDER	VLA\veer		USER	Allow	FullControl	This folder only
c:\689c30e25b477248e094	FOLDER	SYSTEM		OTHER	Allow	FullControl	This folder only

4. When viewing large reports (more than 600 entries), the viewer splits the display into 'Sections' in order to maintain reasonable performance. Use the left pane to select the required section.

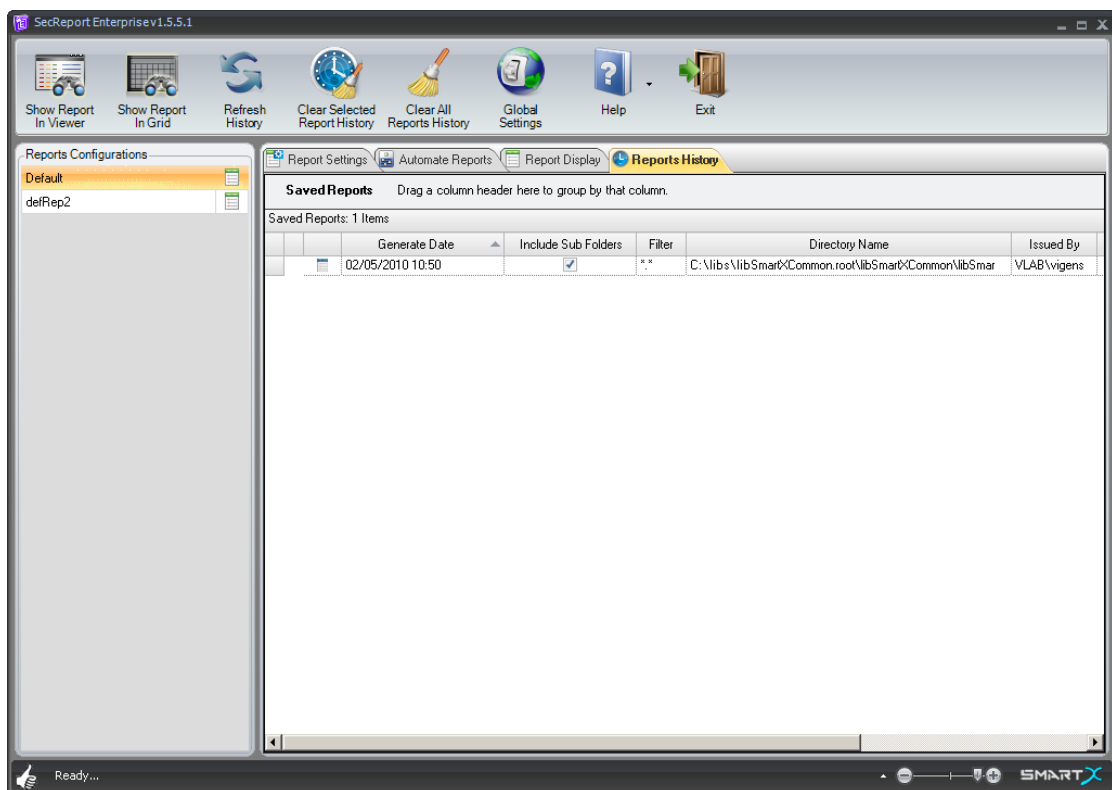
- Click on the 'Save' button to open the list of export options and select the desired format.

Remember: this will only save the part you view.

In order to save a whole file please go back to the console and click on



Reports History















This tab enables you to view which users have accessed and viewed the report and also to compare differences between recent and previously generated reports.

The 'Reports History' tab displays a list of issued reports including various details regarding each report.

The 'Reports History' display has filter and sort options, similar to the 'Report Display' (See Chapter).






Report History tool bar

Icon	Name	Functionality
	Show in grid	Loads the chosen report to the 'Report Display' tab
	Show in viewer	Loads the chosen report to the SecReport Enterprise viewer
	Refresh History	Refreshes the display of saved results
	Clear selected report history	Deletes the history of the current report's configuration. Pay attention: all history of the current configuration will be deleted.
	Clear all reports history	Deletes all history of all report configurations.
	Global Settings	Opens SMTP configuration window

Icon	Name	Functionality
	Help	Opens a sub-menu with the following commands:
	Online Help	Opens the Online User Guide
	About	Opens a window with registration information and a 'Set License' button
	Legal Info	Opens the legal info (EULA or the terms of purchase)
	Check for New Version	Checks for new releases
	Exit	Closes the console


Reports History options

Select a report line and right click for the following options:

Icon	Name	Functionality
	Show	Displays the selected report
	Show in grid	Will load the report to the 'Report Display' tab
	Show in viewer	Will load the report to the SecReport viewer.
	Delete	Deletes the selected report
	Compare to...	Opens a sub-menu with a list of previous reports from which you may select a report for comparison

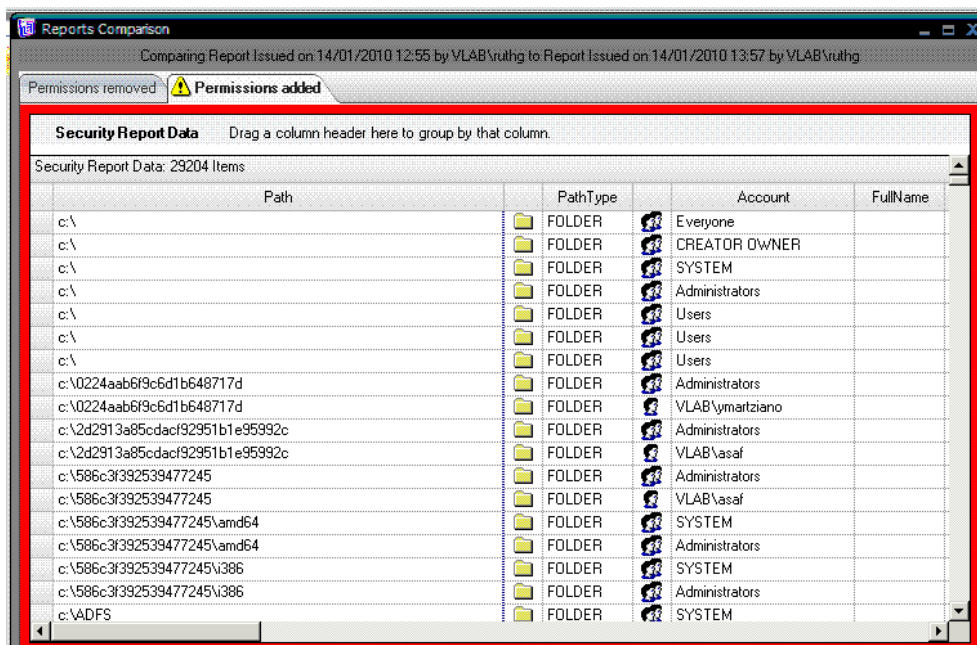
Comparing Reports

SecReport Enterprise allows for analyzing the differences between report results you have saved. Using this method, you can easily track any modifications (additions or removals) to the ACLs on your file system.

1. Select a report.
2. Right click →  'Compare to...'

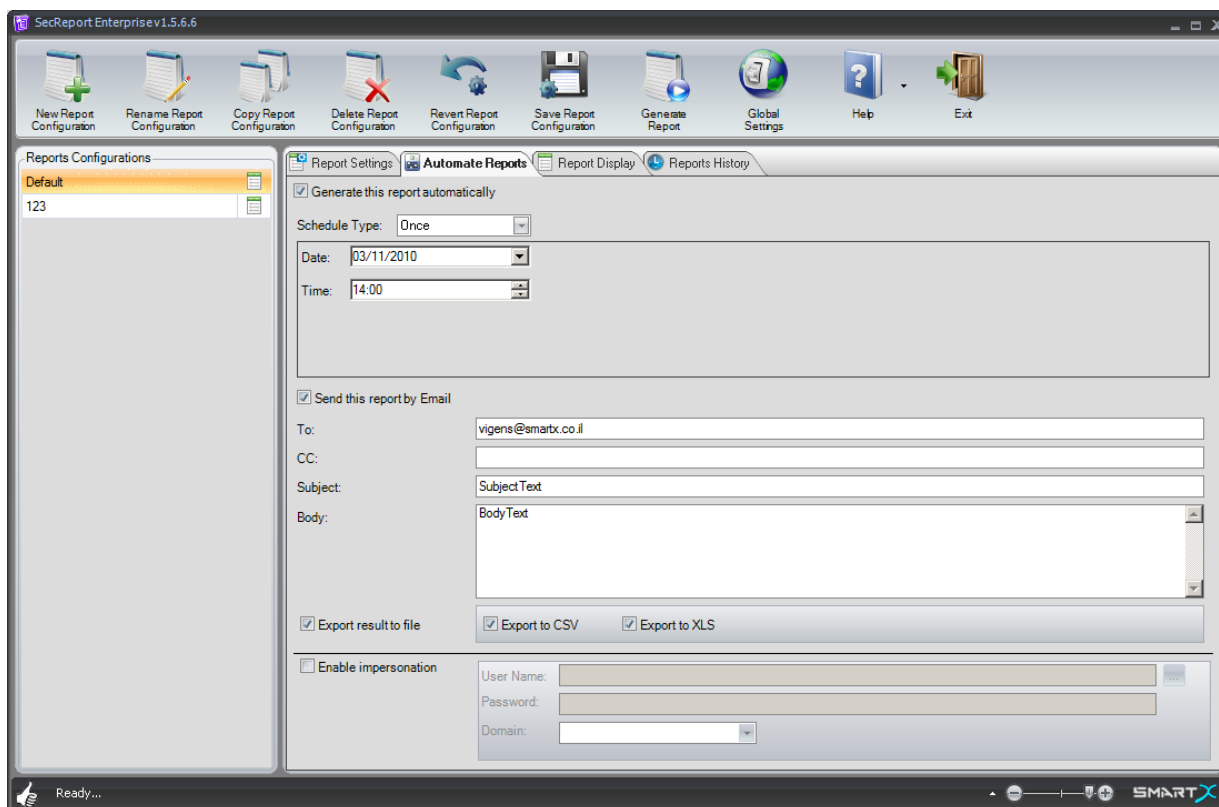
Note: you can only compare reports that were generated using the same configuration.

3. The following window will appear:



4. The Report Comparison window is divided into two tabs.
 - 'Permissions Removed' shows the list of permissions that were removed from the reported folder
 - 'Permissions Added' is highlighted with a red frame and shows the list of permissions that were added to the reported folder.

Automating Reports using the Web Service component



Follow these steps to automatically send reports to specified user/s:

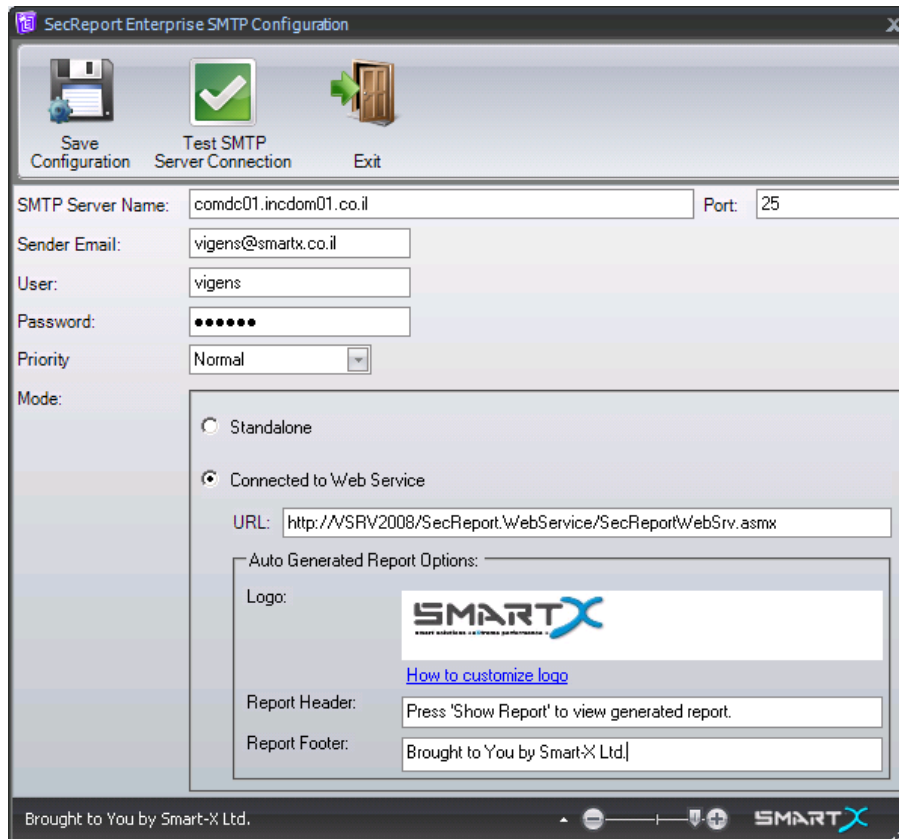
Web Service Configuration

1. First make sure that you have installed the Web Service component or that you have an active Web Service installed (to see explanation go to 'Installing SecReport Enterprise Web Service' chapter).
2. Choose a report from the list (left side of the console).



3. Click on 'Global Settings'.
4. In the 'SecReport Enterprise SMTP Configuration' window:

- Click on 'Connect to Web Service' in the 'Mode' section.
NOTE: if you selected 'Connect to Web Service' during installation of the console MSI file this option will be set automatically.



- Fill in the relevant parameters:
SMTP Server Name – Type the path to your SMTP Server
Sender Email – Type E-mail address for report **sender**
User – Type sender's Exchange account user name (or leave blank if authentication is not required)
Password – Type sender's exchange account password (or leave blank if authentication is not required)
Priority – Set mail priority (high or low)



- Click on 'Test SMTP Server Connection'.
 - i) In the 'Auto Generate Report Options' define report logo, header and footer.
To change the default logo provided by Smart-X, see the chapter below.



- Click on 'Save Configurations'



- Click on 'Exit' to return to SecReport Console

How to Customize the Web Report Logo

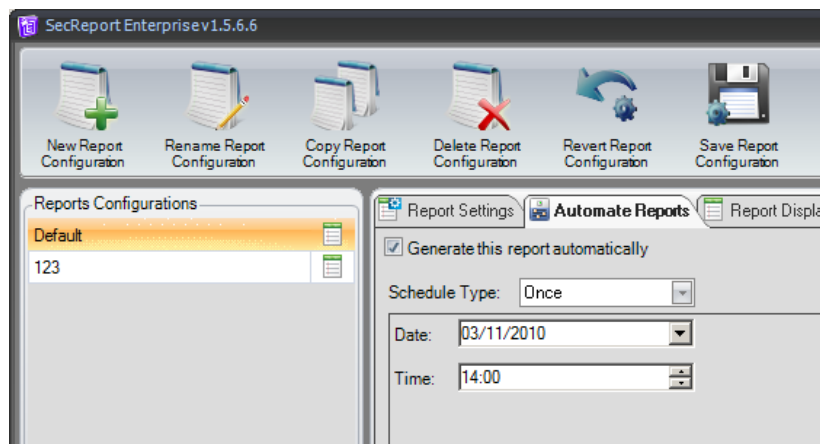
1. Create a new Logo file and save it in JPG format as "Custom_Logo.JPG" file (recommended size 360 x 100 px)
2. Go to "..\SecReport.WebSite\images" folder on your IIS Server
3. Replace "..\SecReport.WebSite\images\Custom_Logo.JPG" with your new logo file.

Automatic Generation Settings

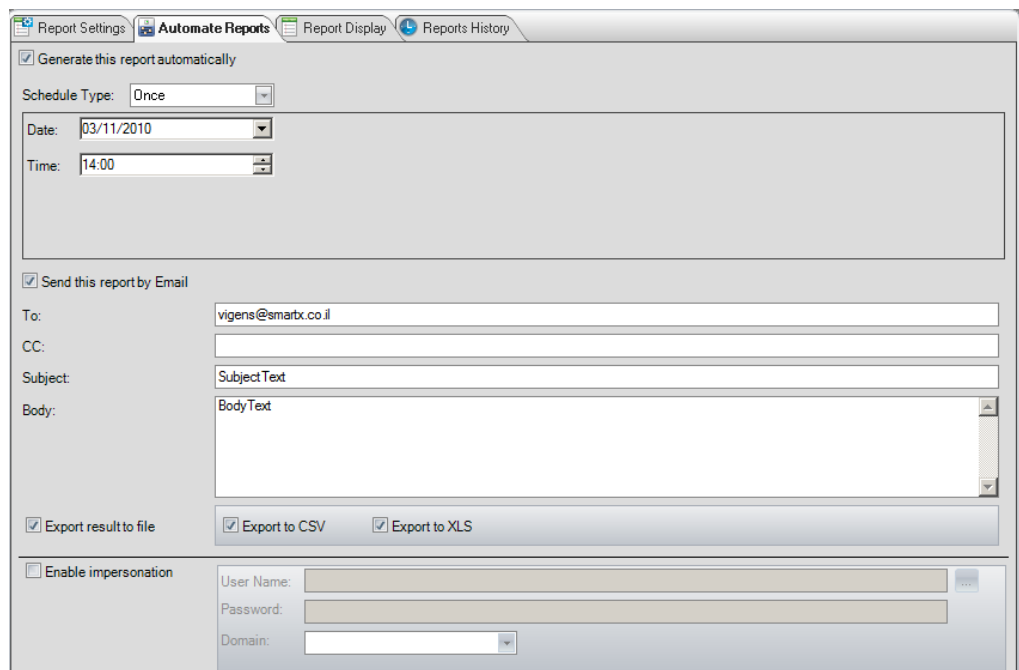
The 'Automate Reports' tab allows you to set the schedule for automatic generation of report as well as mail parameters.

Please follow the steps below.

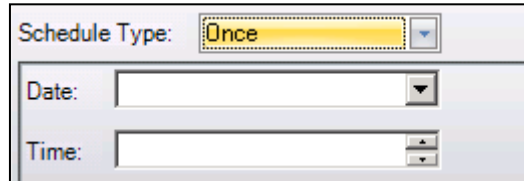
1. Select one of your report configurations and switch to the “Automate Reports” tab.



2. In the 'Automatic Generation' tab:



- Click on 'Generate this Report Automatically' checkbox to enable the fields.



The screenshot shows a configuration box for scheduling. It has three main sections: 'Schedule Type' with a dropdown menu showing 'Once', 'Date' with a dropdown menu, and 'Time' with a dropdown menu.

- Set the Schedule:
 - i) Choose schedule type: Once/ Daily/ Weekly/ Monthly (The fields in the box below will adjust according to your settings)
 - ii) Set schedule parameters
- Click on the 'Send this report by Email' and Set mail parameters:
 - i) Click on 'Set this report by email' to enable the fields
 - ii) Fill in the relevant content according to your needs (to, subject, body etc.)
- Click on 'Export results to file' to set an automatic report generation and exporting to a file by the schedule you defined.
 - i) Export to CSV – will save the automatic generated report to a CSV file which will be sent to you by mail for download.
 - ii) Export to XLS – will save the automatic generated report to Excel which will be sent to you by mail for download.

3. Use Impersonation

SecReport Enterprise enables you to use alternative credentials in order to generate the report.

When this option is not selected, the user running the Web Service will be used to scan the directory and generate the report.

When this option is selected, the specified user will be impersonated and used for the report generation.

In order to use this option:

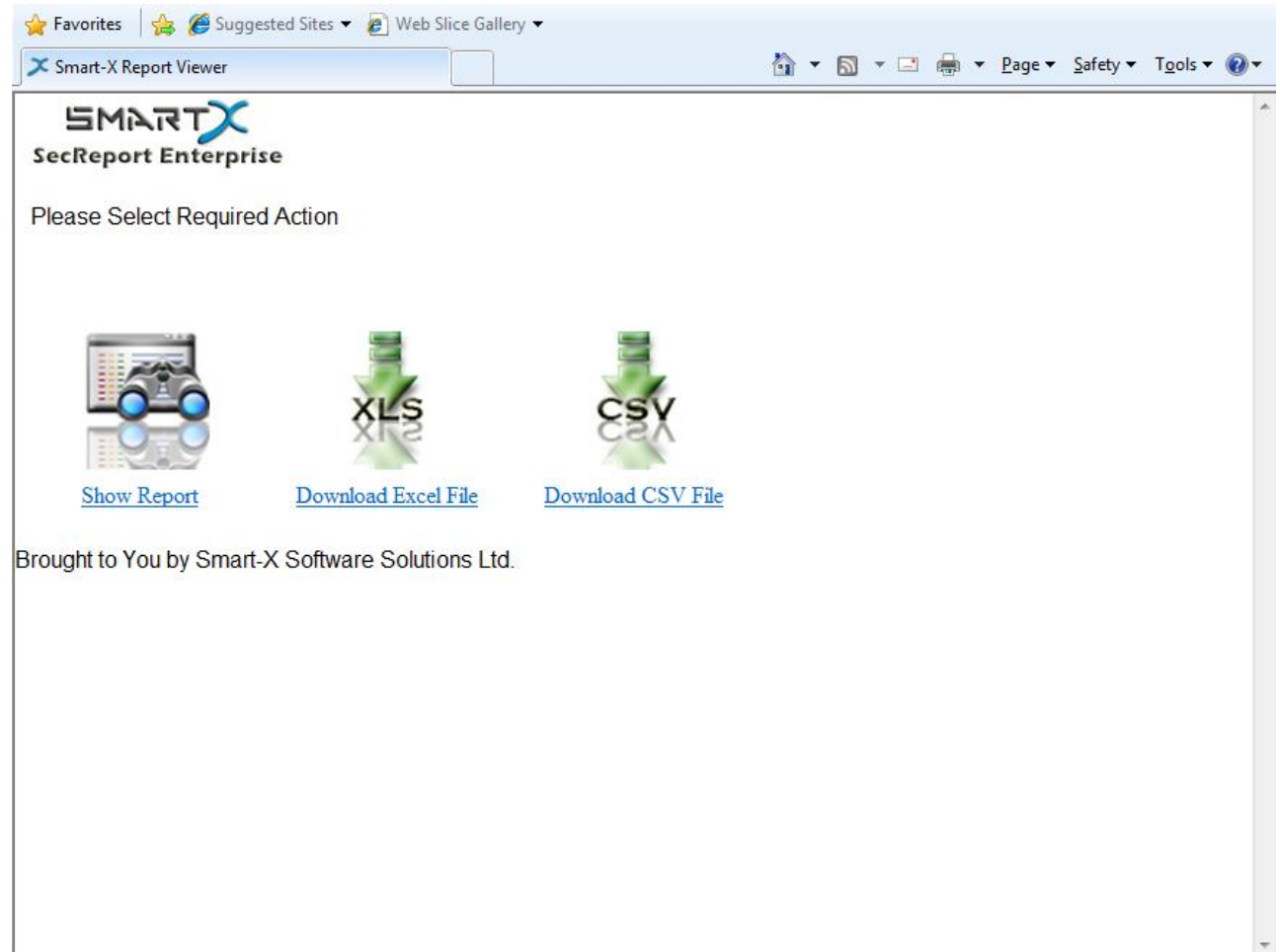
- i. Open 'Automatic Generation' tab.
- ii. Click on 'Enable Impersonation'.
- iii. Type authorized user's credentials.

- iv. Click on  'Save Configuration'.

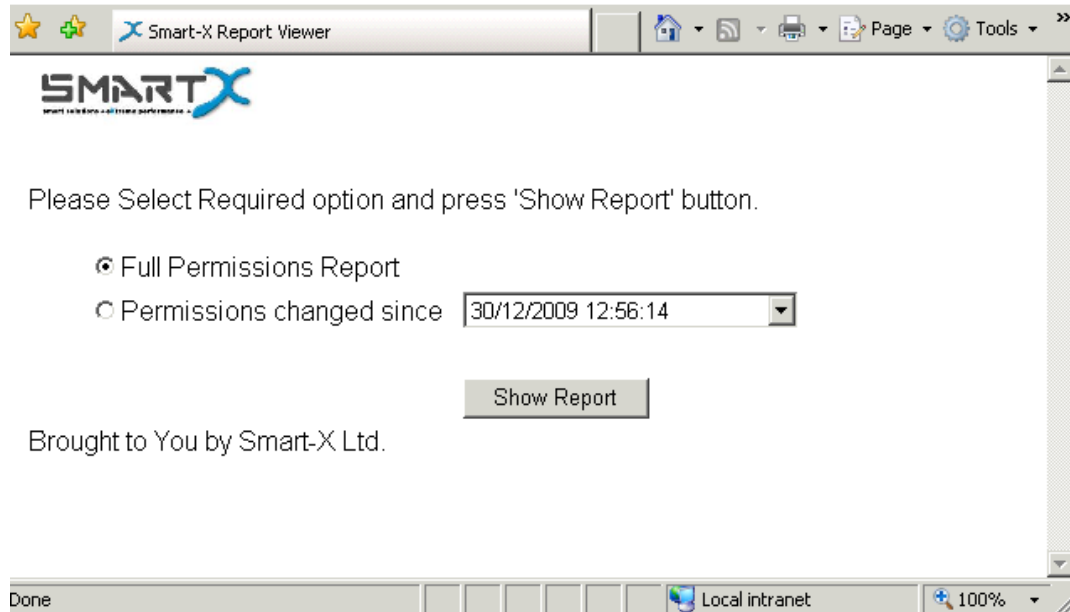
Viewing Automatic Reports

The automatic report will be sent with a link to a web display of the report.

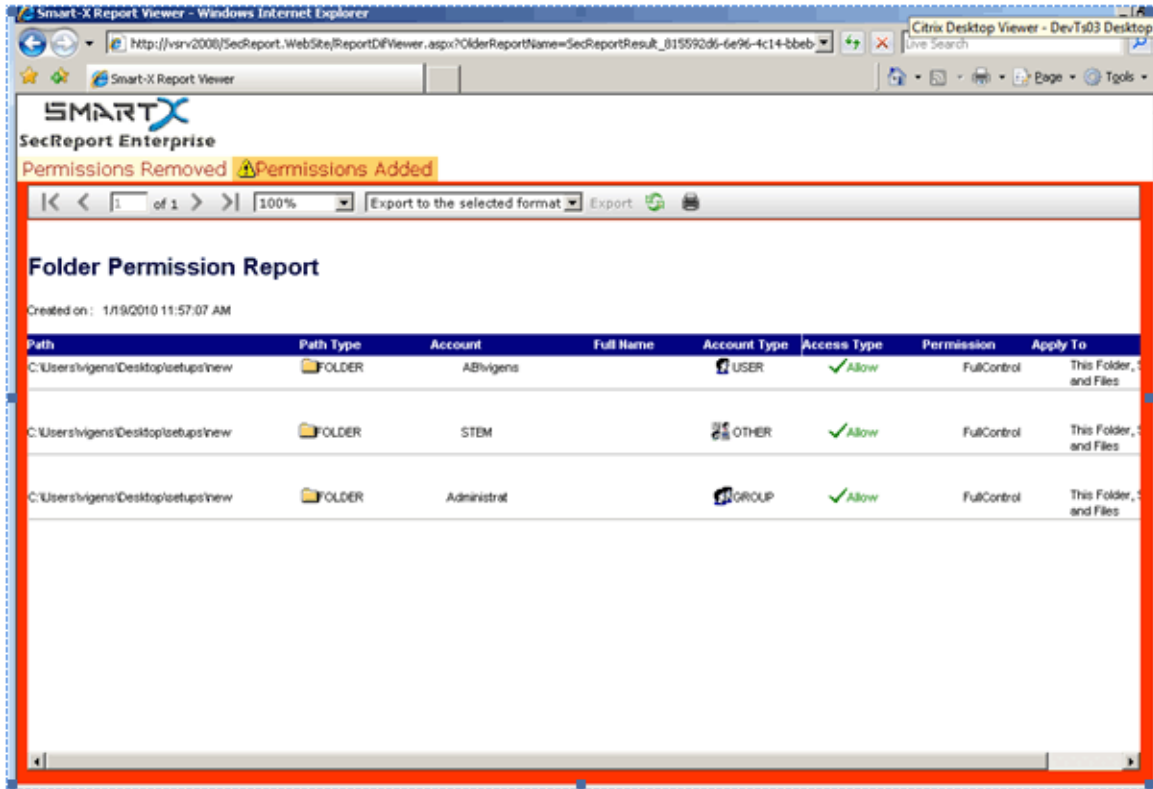
Clicking on the link will open an internet browser with the following content:



- Click on 'Download Excel File' to download the excel file created.
- Click on 'Download CSV File' to download the CSV file created.
- Click on 'Show Report' to open the following window:



1. Click on 'Full Permission Report' to display the report that was sent to you and click on 'Show Report'.
 - The web viewer allows you to export the report to various formats or print it.
2. Click on 'Permissions changed since' to view a comparison between the sent report and an earlier report.
 - i) Choose the report you want to compare from the inbox.
 - Click on 'Show Report'
 - The web viewer will display a comparison similar to the 'Compare to..' function with a 'Permissions Removed' and a 'Permission Added' tab
3. Print or export the report using the fields in the tool bar.



Note: When viewing a report, each visit is registered and displayed in the 'Report History' tab of the SecReport Console.

Troubleshooting Web Service Availability

If you experience any difficulties or problems after or during the Web Service installation, please follow the troubleshooting steps listed [here](#).