

Smart-[X](#) Software Solutions

RunAsGUI User guide

Table of Contents:

WELCOME	3
ABOUT RUNASGUI	4
MORE SYSTEM MANAGEMENT TOOLS	5
REQUIREMENTS	7
LICENSING AND INSTALLATION	7
LICENSE	7
ADMIN MODULE INSTALLATION	7
CLIENT MODULE INSTALLATION	8
LICENSING	9
WORKING WITH RUNASGUI	10
CONFIGURATION	10
USAGE SCENARIOS	16



Chapter

Welcome

Welcome to Smart-X.

Thank you for choosing RunAsGUI™, one of the top tools developed by the Smart-X Software Solutions expert team in an effort to optimize your everyday work. RunAsGUI helps you manage your system efficiently, effortlessly and productively.

This chapter describes the features and capabilities of RunAsGUI, and lists additional tools in the same field that can help optimize your work environment.

For more tools, click on the link to visit our website at www.smart-x.com.

This Chapter Contains:

- About RunAsGUI.
- More System Management tools.

About RunAsGUI

RunAsGUI allows you to configure execution parameters, save them in an encrypted configuration file (RAG extension), distribute it to end users and run applications, scripts and commands using the configuration file.

RunAsGUI's main goal is to encrypt credentials of a privileged user and allow non-privileged users to run applications / scripts using the encrypted credentials.

RunAsGUI contains two modules:

- 1. RunAsGUI Configuration Wizard.**

This module should be installed on the administrator's workstation. The Configuration Wizard allows administrators to configure execution parameters and save them in a RAG file for later use by the Client Utility.

- 2. RunAsGUI Client Module.**

This module runs on the user's workstation. You can choose whether or not you want to install it on client machines, or run from the network. The RunAsGUI client utility reads the encrypted RAG files and executes the commands configured in it.

More System management tools

GPHide Drive

- Extends the "Hide these specified drives in my computer", and the "Prevent access to drives from my computer" Group Policy options to include additional drive letters.
- Enables you to hide more drives than default administrative templates allow.

Duplicate SIDs Monitor (DSM)

Monitors your network for duplicate SIDs computers and easily resolves it from your own workstation.

Using computer images for OS deployment? Technicians forgot to run SYSPREP / NEWSID? You probably have hundreds of duplicate SID computers in your network!

Duplicate SID computers is a major security risk and might also cause all kinds of issues when working with third party products such as Anti Virus, Deployment systems and other system products.

Duplicate SID Monitor (DSM) is a revolutionary product which constantly monitors your network to find computers with duplicate SIDs. The information is stored locally and enables administrators to query for duplicate SID computers and resolve it remotely by a single click.



Working with RunAsGUI

This chapter provides explicit instructions on how to apply RunAsGUI.

After reading the content carefully and following the prescribed steps you will find that RunAsGUI is simple to operate.

This Chapter Contains:

- I: Requirements.
- II: Licensing and Installation.
- II: Working with RunAsGUI.

Requirements

Admin Configuration Wizard:

- Windows XP or higher version
- .Net Framework 2.0 SP1

Client Utility

- Windows 2000 or higher version.

Licensing and installation

License

The product you have downloaded to your pc is a Beta software. The released version will be available in Q4 2009. Please read the EULA for further details.

Admin Module Installation

The Admin Configuration Wizard should be installed on the administrator's workstation.

To install RunAsGUI from a downloaded file:

- Double click the installation file.
- Read the program license conditions carefully.
- Choose the directory where you wish to install RunAsGUI.
- Follow the instructions by the Setup program displayed on the screen until you finish the installation.
- A desktop icon of the RunAsGUI will be placed on the desktop and in the start menu.

Client module installation

The client module's role is to read the encrypted data of the RAG files, created by the Admin Configuration Wizard, decrypt it and run the application / command configured in the RAG file using alternative credentials. The Client Module can either run from the network without local installation, or be installed locally and run from the local computer.

The Client Module should be installed on client machines in the following scenario:

When RunAsGUI is used to manually launch applications using a shortcut and the client machine is occasionally offline. For example, laptop users who use RunAsGUI to launch legacy applications using a privileged user.

In cases where client machines are always connected to the network, the Client Module can run from the network without being installed on client workstations by using a desktop shortcut, logon script, etc.

The installation process is similar to the installation of the Admin Module.

- Simply launch the msi file.
- Follow the installation instructions.
- Finish the process by clicking on the 'Close' button.

Licensing

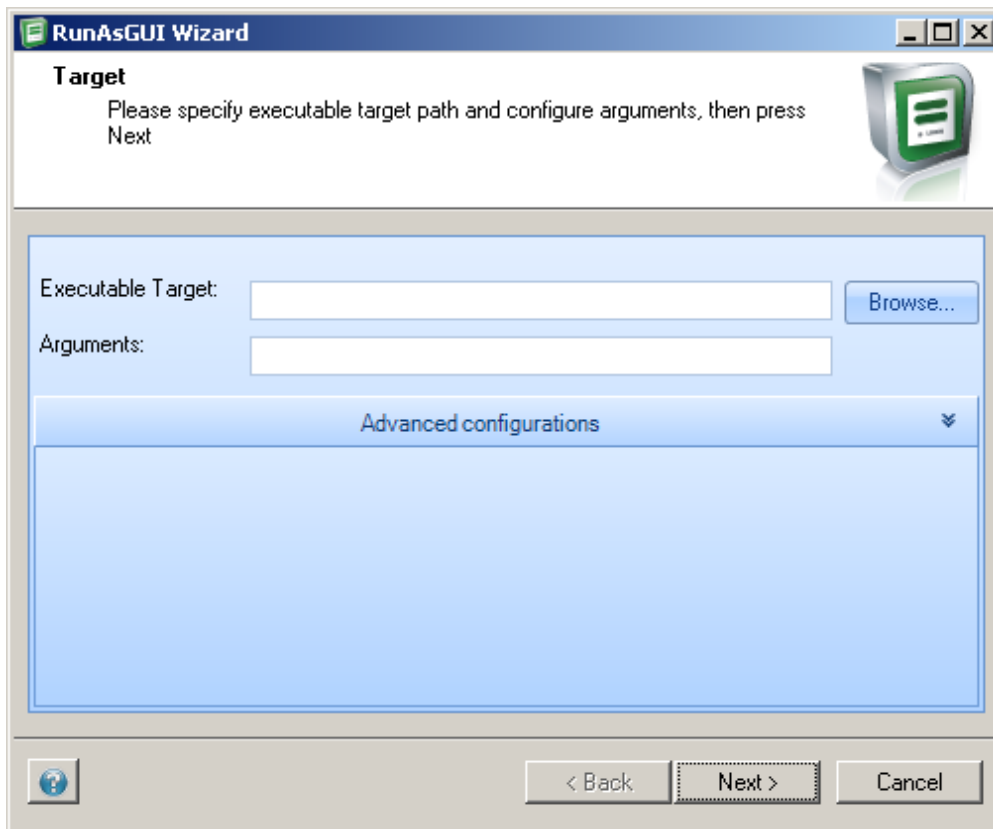
RunAsGUI is beta software. You can use it freely on any number of machines until the beta version expires, as specified in the EULA. Prior to the date of expiration of the beta release, Smart-X will publish the official release. A few days before expiration when you launch the application, you will see a license window from which you can do one of the following three things:


- Press on '**Continue**', **which** will run the application.
- Press on '**Feedback**', which will open the feedback forum on Smart-x web site.
- Press on '**Go to Web Site**', **which** will open Smart-x web site.

Working with RunAsGUI

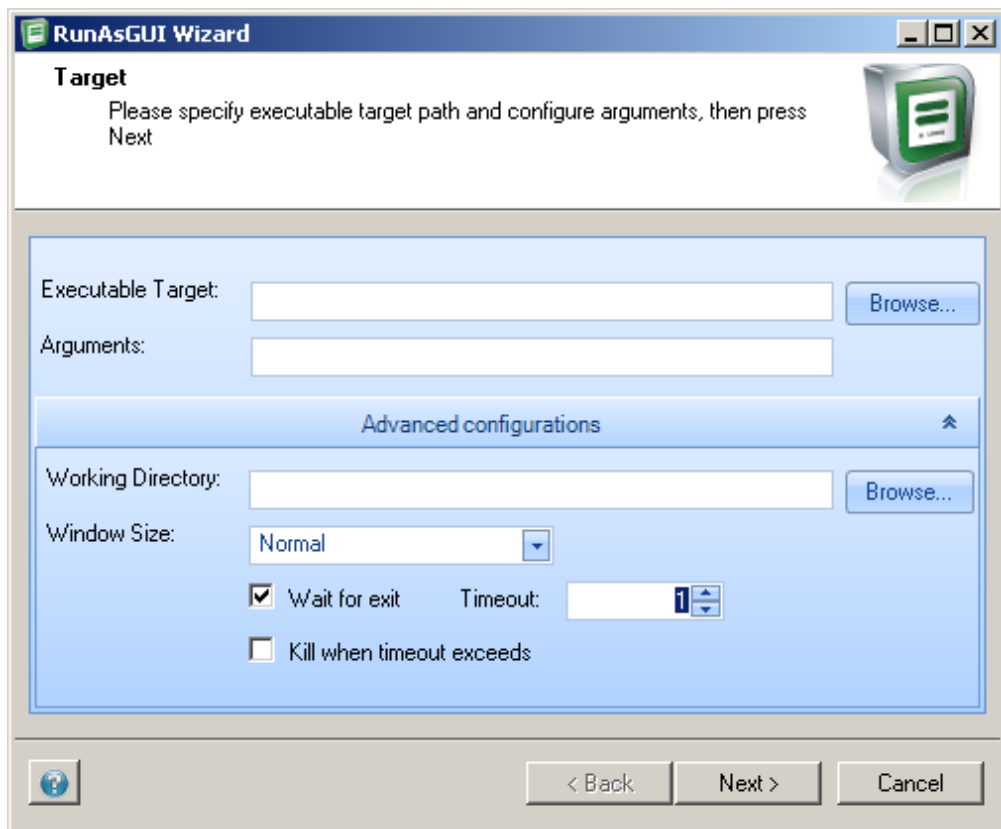
Configuration

1. Launch the Admin Module.
2. **Target**



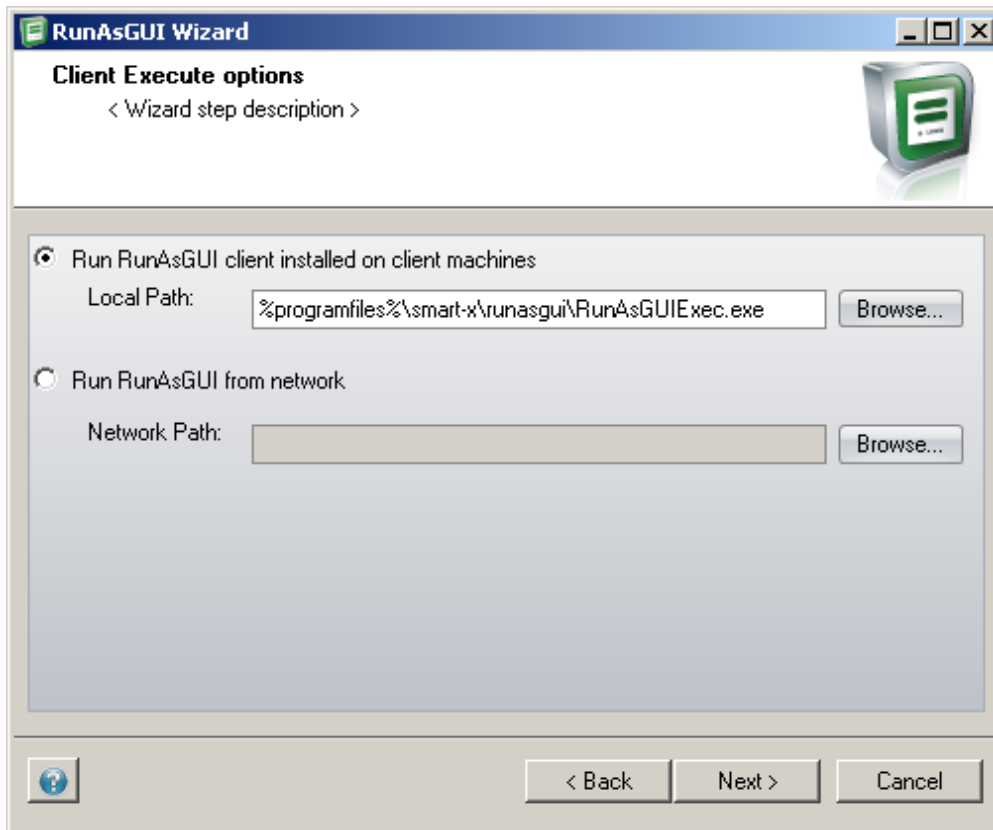
- Click on the 'Browse' button to choose the executable file (For example c:\Windows\notepad.exe)
- In the 'Arguments' field you can type arguments for the chosen executable file to use.
-  - opens the 'About' window.

- **Advanced configurations:**



- i) Working directory** – browse to select a working directory for the process. Leave blank to use the current executable directory.
- ii) Window size** – choose the windows size for the executable target application.
- iii) Wait for exit** – Client Module will stay running until the configured process has exited. This is useful for synchronic processing using batch files.
- iv) Kill when timeout exceeds** – will force termination of the configured application after the defined timeout is expired.

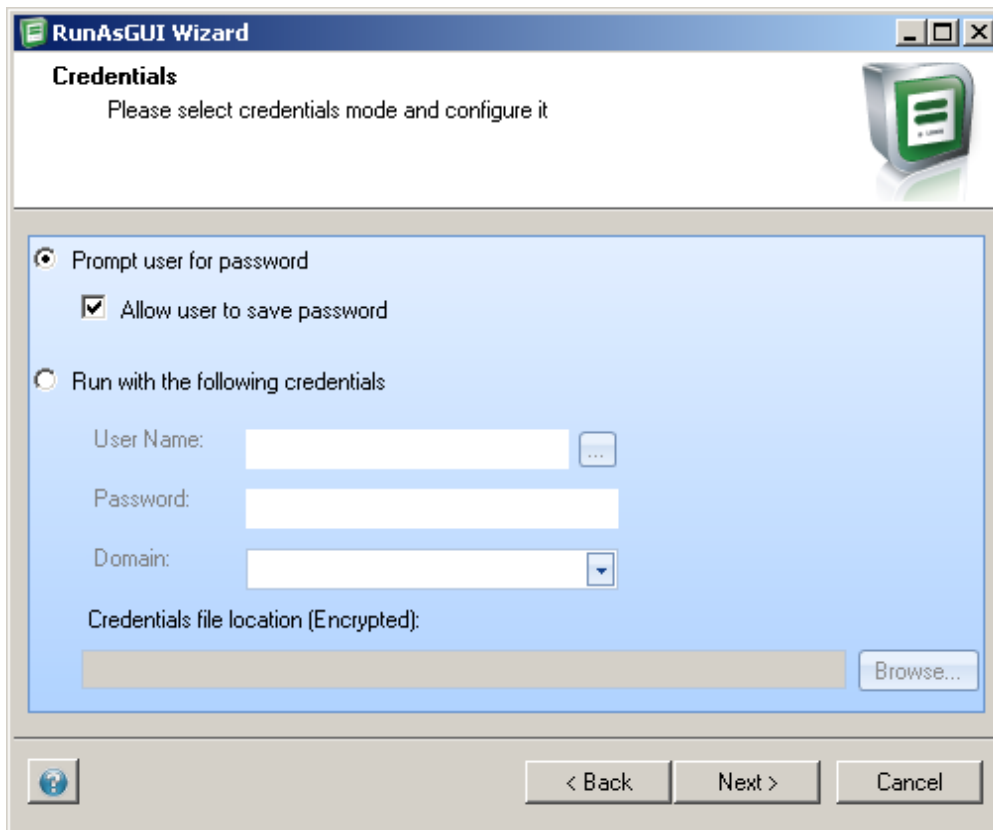
3. Click on 'Next' to continue.



- 4.

- i) If you intend to install the Client Module locally on each workstation, select the first option and verify that the local path is correct.
- ii) If you intend to run the Client Module directly from the network without installing it on each workstation, select the second option and enter the network path. The Client Module executable file should be located on the network path specified. If it isn't already there, the configuration wizard will copy it.
Please note: You should configure 'Read and Execute' permissions for all end users on the specified network path.

5. Credentials

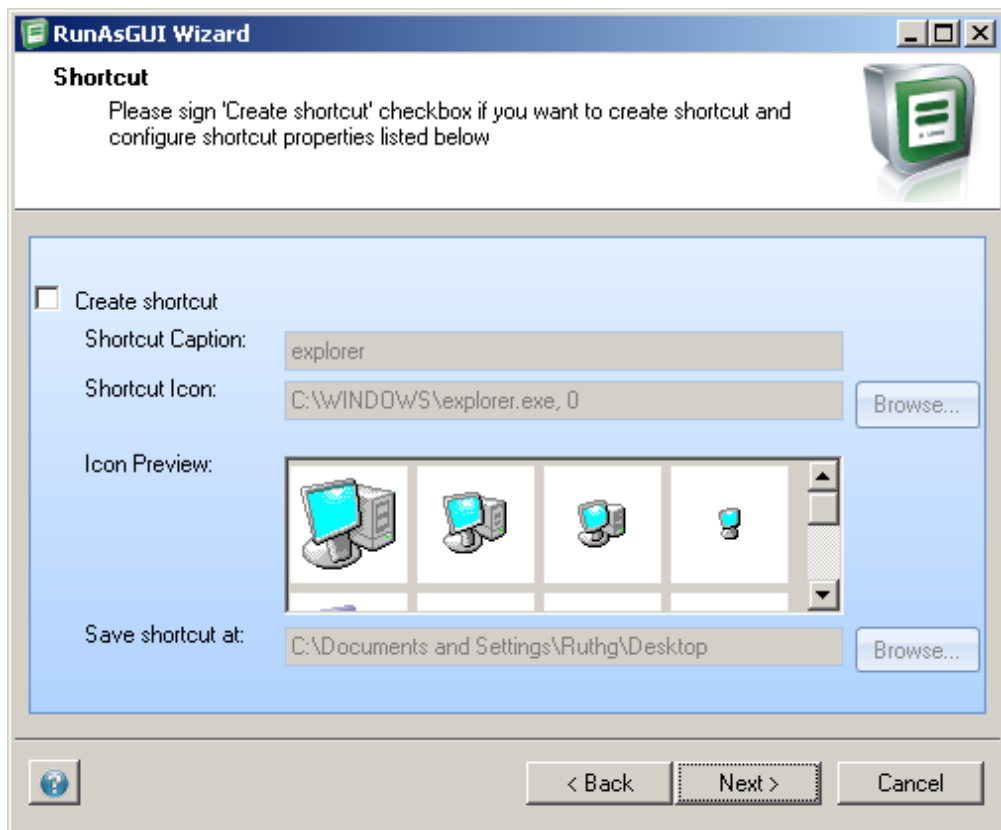


- **Prompt user for password** – When this option is selected, users running the Client Module will receive a logon screen. The credentials entered by the users will be validated and used to run the configured application / command.
 - i) Allow user to save password** – choosing this option will display the "save password" option in the logon window. **The password will be encrypted and stored in the user's registry.**
- **Run with the following credentials** – choosing this option will automatically launch the chosen application with the given credentials. These credentials will be encrypted and stored in a RAG file.

- **Credentials file location** – browse to change the RAG file (with the encrypted credentials) location. The path to the RAG file should be accessible to all client machines. If you intend to use RunAsGUI on laptop machines that might not be connected to the network, specify a local path that exists on all client machines and copy the RAG file to each machine at the chosen path. For example, "%userprofile%\AdminApp.RAG".

6. Click on 'Next' to continue.

7. Shortcut

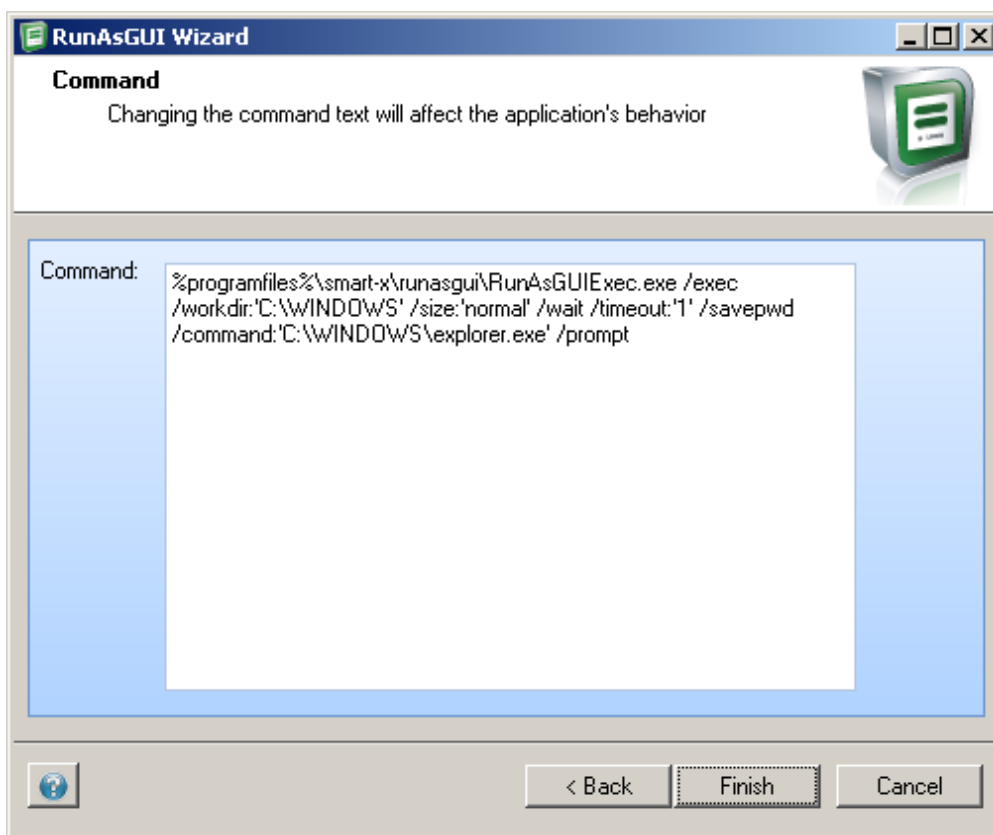


Check 'Create Shortcut' if you want to create a shortcut.
You can distribute the shortcut to the user's desktop.

- Shortcut Caption – type a caption for the new icon.

- Shortcut icon – browse to choose and icon image.
 - Icon preview – displays all the icon size and formats.
 - Save shortcut at – browse to choose a different location for the new shortcut.
8. Click on 'Next' to continue.

9. Command



This step displays the command line that should be used to run the Client Module with the selected configuration. You can copy and paste this command line in a batch file or save it for later use.

10. Click on 'Finish' to end the process.

Usage Scenarios

RunAsGUI client application can be run locally or from a network share.

You can choose to run it from command line, a shortcut or use our native .RAG file extension (if you chose to save the credentials in the encrypted file).

The following scenarios detail when each method should be used.

Scenario I:

A specific application which runs on desktop computers (which are always connected to the LAN) requires administrative credentials in order to run properly.

Solution:

1. Install RunAsGUI Configuration Wizard on your workstation only. You do not need to install RunAsGUI Client on client machines.
2. Prepare a network share with read permissions for all relevant users and read-write permissions for yourself.
3. Run the configuration wizard on your workstation
 - Configure the path to the target application's executive file.
 - Select 'Run from network' and choose the network share.
 - Select 'Run with the following credentials' and type the credentials of the privileged user. Under the 'Credentials file location', specify the network share.
 - Choose to create an Icon and place it on your desktop.

- Finish the wizard, test the newly created icon on your desktop and after verifying that the application runs correctly, deploy the icon to all client machines.

Scenario II:

A specific application which runs on both laptop and desktop machines requires administrative credentials in order to run properly. The application is also used when the computers are offline.

Solution:

1. Install RunAsGUI Configuration Wizard on your workstation only. You do not need to install RunAsGUI client on client machines.
2. Install RunAsGUI Client Module on all client machines.
3. Run the configuration wizard on your workstation
 - Configure the path to the target application's executive file.
 - Select 'Run RunAsGUI client installed on local machines' verify that the path entered is the path to the local installation of the client module.
 - Select 'Run with the following credentials' and type the credentials of the privileged user. You can either use a local user account which exists on all client machines, or specify a domain user account. However, if you specify a domain user account, users will only be able to run the application if the user can be validated. (By default, Windows XP caches the last 10 credentials). Choose to save the RAG file on a local path which

exists on all client machines, for example,
'C:\Windows\Sample.RAG'.

- Choose to create an Icon and place it on your desktop.
- Finish the wizard and test the newly created icon on your desktop.
- Copy the RAG file to the location you specified on all client machines.
- Copy the shortcut to user's desktop.

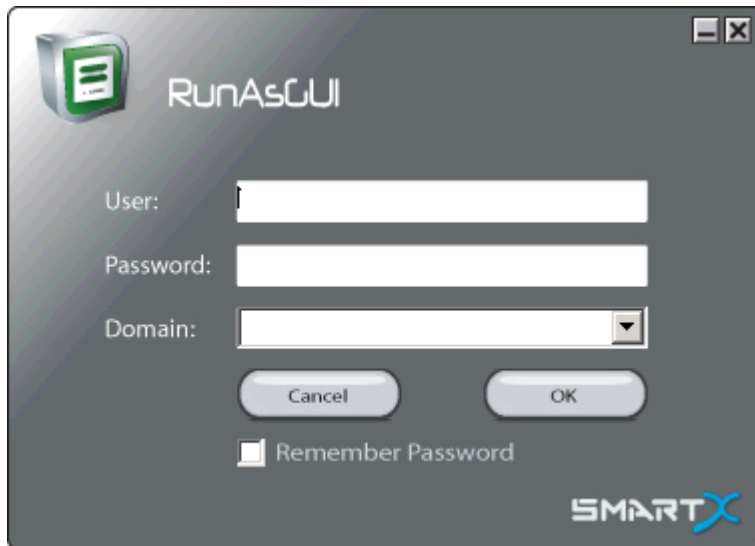
Scenario III

You are in a middle of Active Directory Domain migration. Users are logging in with their account in the target domain and one of the applications requires running under the context of a user account from the source domain. The application is running on Terminal Servers.

Solution:

1. Install RunAsGUI Configuration Wizard on your workstation only. You do not need to install RunAsGUI client on client machines.
2. Prepare a network share with read permissions for all relevant users and read-write permissions for yourself.
3. Run the configuration wizard on your workstation
 - Configure the path to the target application's executive file.
 - Select 'Run from network' and choose the network share.
 - Select 'Prompt user for password' and 'Allow user to save password'
 - Choose to create an Icon and place it on your desktop.

- Finish the wizard, test the newly created icon on your desktop and after verifying that the application runs correctly; deploy the icon to all client machines.
- When user clicks the shortcut, a logon window will appear.



4. Type the credentials and click on 'OK'
5. If you select "Remember Password" the password will be saved on the user's registry (encrypted)
6. The executable file will be launched.