

Smart-**X** Software Solutions

**SignatureOne User guide**

---

## **Table of content:**

<b>WELCOME</b>	<b>3</b>
<b>WHAT IS SIGNATUREONE?</b>	<b>4</b>
<b>REQUIREMENTS</b>	<b>6</b>
<b>LICENSING</b>	<b>6</b>
<b>HOW TO USE SIGNATUREONE</b>	<b>6</b>
<b>CREATING A SIGNATURE TEMPLATE</b>	<b>7</b>
<b>INSTALLATION</b>	<b>9</b>
<b>TO INSTALL SIGNATUREONE IN SILENT MODE:</b>	<b>12</b>
<b>RUNNING THE APPLICATION</b>	<b>13</b>
<b>REMARKS</b>	<b>14</b>
<b>KNOWN ISSUES</b>	<b>14</b>
<b>ACTIVE DIRECTORY TRANSLATION TABLE</b>	<b>15</b>



Chapter

## Welcome

Welcome to Smart-X.

Thank you for choosing SignatureOne™, one of the top tools developed by Smart-X Software Solutions in an effort to optimize your daily work. SignatureOne helps you manage your system efficiently, effortlessly and productively.

This chapter describes the features and capabilities of SignatureOne, and lists additional tools in the same field that can help optimize your work environment.

For more tools, click on the link to visit our website at [www.Smart-X.com](http://www.Smart-X.com).

### **This Chapter Contains:**

- What is SignatureOne?

## What Is SignatureOne?

SignatureOne is a utility which enables you to create an Outlook Signature template which embeds Active Directory properties and distribute the signature to users in your organization.

An example of such a signature:

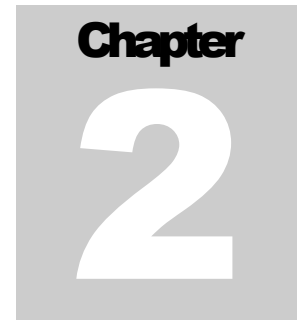
John Smith  
Smart-X  
Mobile: 052-3333333  
Email: [JohnS@smart-x.com](mailto:JohnS@smart-x.com)  
URL: [www.smart-x.com](http://www.smart-x.com)  


A dynamic Template Signature example:

GetProp(givenName) GetProp(sn)  
GetProp(Company)  
Mobile: GetProp(Mobile)  
Email: [GetProp\(Mail\)](#)  
URL: [www.smart-x.com](http://www.smart-x.com)  


Note: see AD property translation table at the end of the Guide.

After running the application, a signature will be created with the executing user's details replacing all the "GetProp(Property Name)" in the Template.



## **Working with SignatureOne**

This chapter provides explicit instructions on how to apply SignatureOne.

After reading the content carefully and following the prescribed steps you will find that SignatureOne is simple to operate.

### **This Chapter Contains:**

- I: Requirements and Licensing
- II: Preparing Signature template
- III: Installation
- IV: Running the Application

## Requirements

Windows 2000, XP, 2003, Vista and 2008.

Office 2003 and 2007.

Preconfigured Exchange account.

.Net Framework 2.0.

## Licensing

The product you have downloaded to your pc is a Freeware.

Please read the EULA to learn about the conditions and rights.

## How to use SignatureOne

The following steps are required in applying SignatureOne:

- Create a signature template and place it in a common directory
- Install SignatureOne on client workstations / Terminal Servers
- Distribute SignatureOne parameters through Group Policy(Optional)

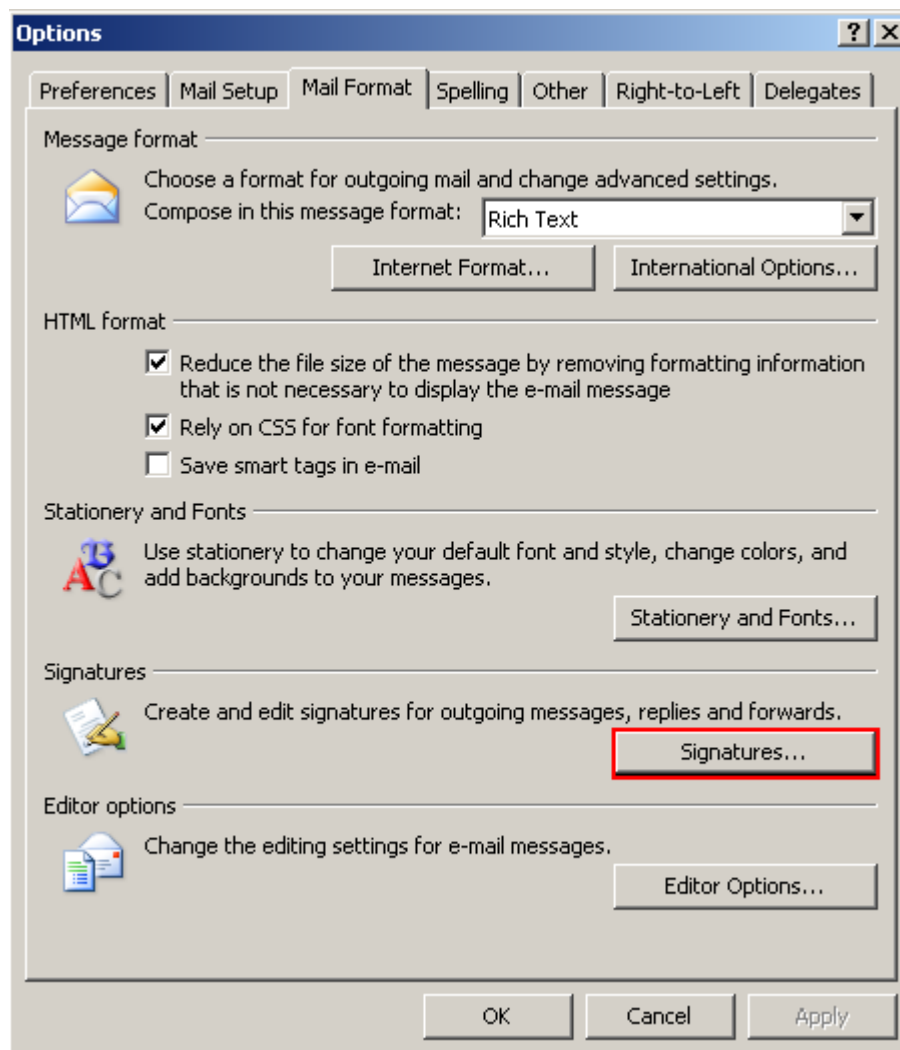
This guide details the required steps of implementing SignatureOne in your organization.

## Creating a Signature Template

NOTE: This procedure should be done before installing the program.

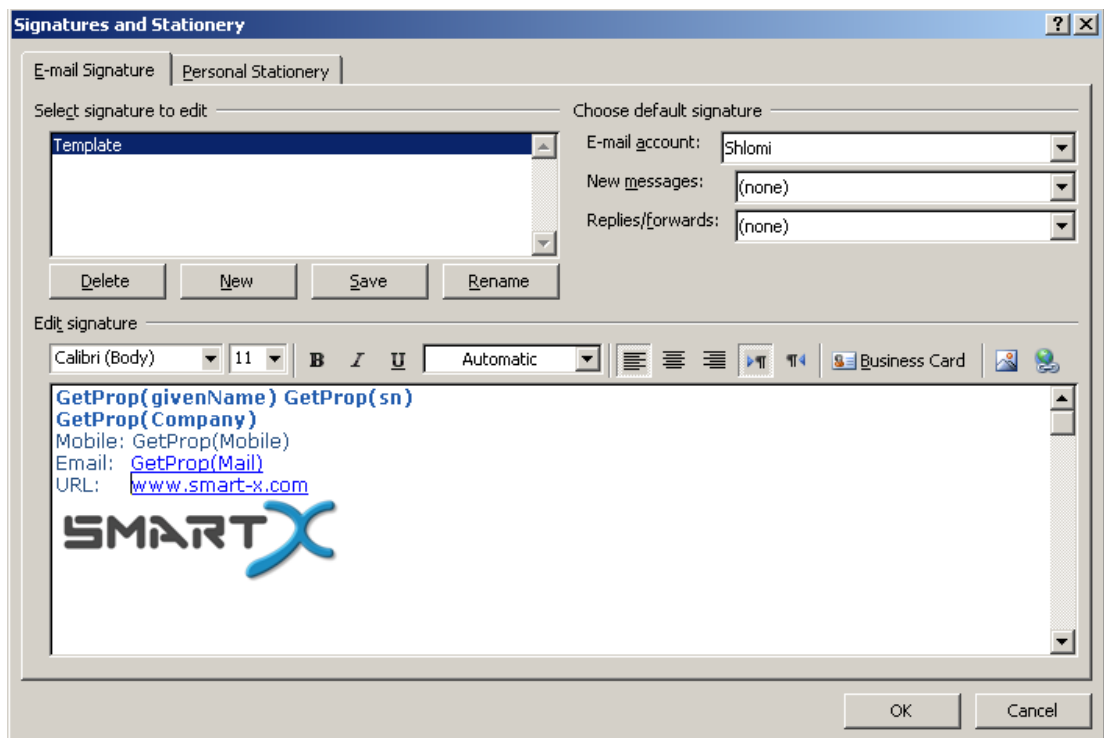
(The example below applies for Outlook 2007)

1. Go to Tools -> Options, select Mail Format and click on Signatures

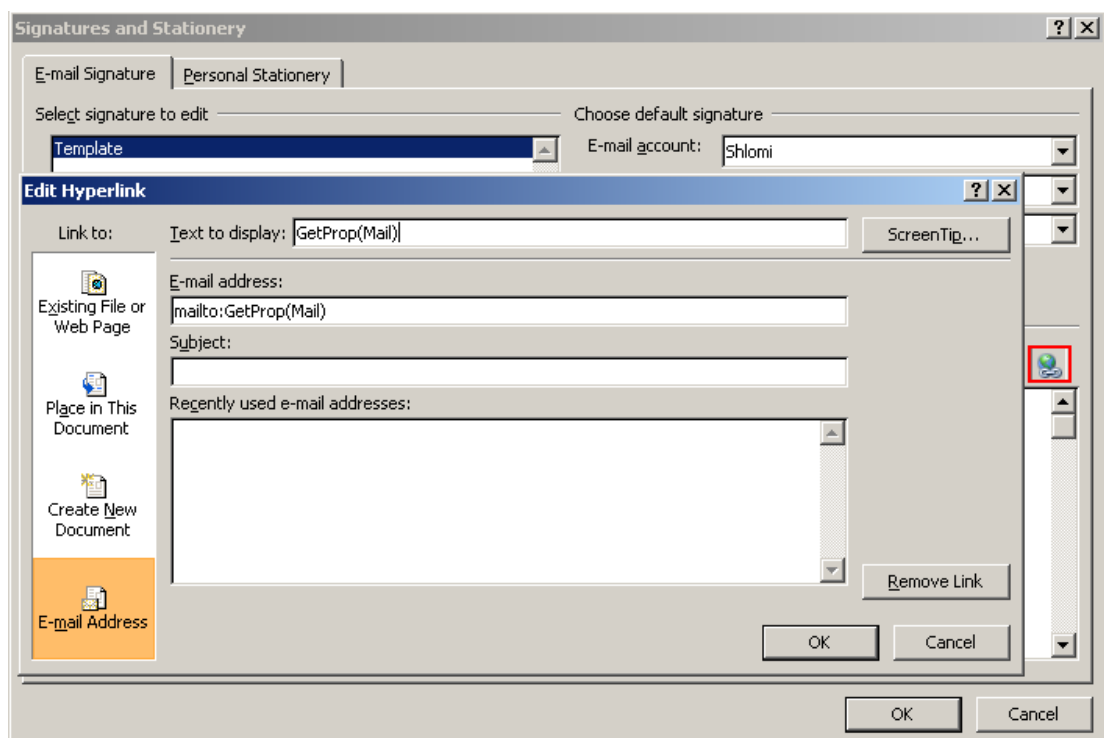


2. Click New to create a new Signature, name it (for example: 'Signature\_Template') and edit the signature content just like a regular word document.
  - Type "GetProp(<Property Name>)" where ever you would like the property value to appear (replace <Property Name> with the Active Directory property [see translation at the end of this guide) and

click Save.



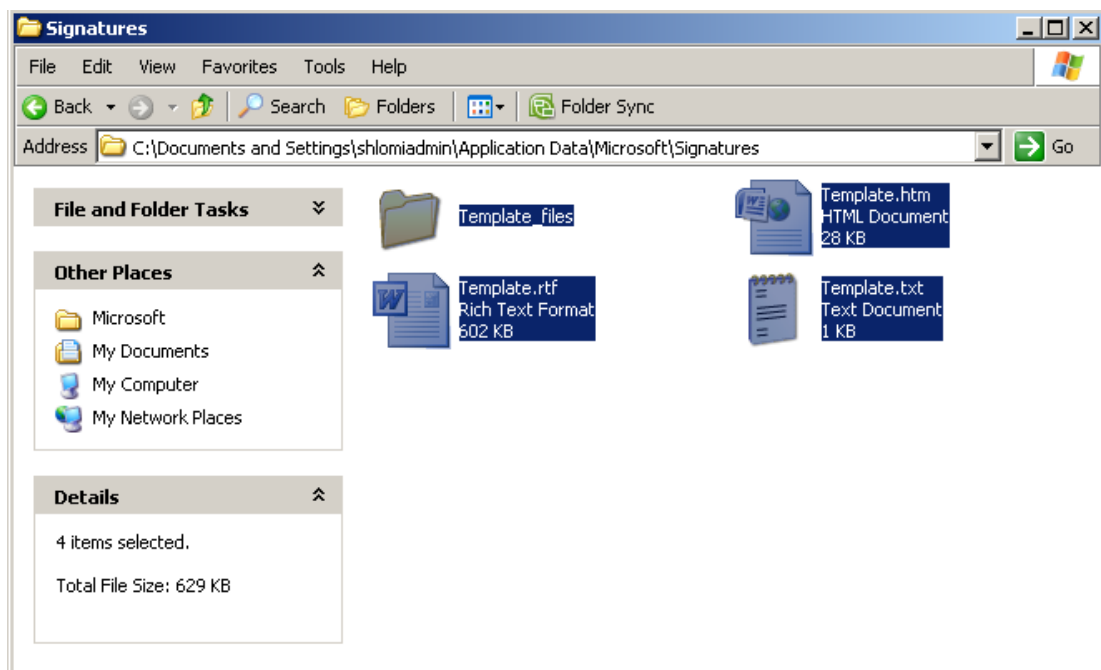
3. You may also use Active Directory Properties in Hyperlinks.



4. Now create a folder in the network **and name it with the exact same name you gave to the Template Signature** (for example: if you named the Outlook Signature Template 'Signature\_Template')

now name the folder you create with the same name: 'Signature\_Template'). Make sure it is a shared folder which can be accessed (Read only) by all users.

- Copy all the signature files generated by Outlook to the new folder you created. To do so, click Start->Run and type: "%appdata%\Microsoft\Signatures" and then press enter. Three files with the signature name should appear, and a folder for the signature additional files. Move these items to the new folder you created.



Note: Do not rename the files or folder names.

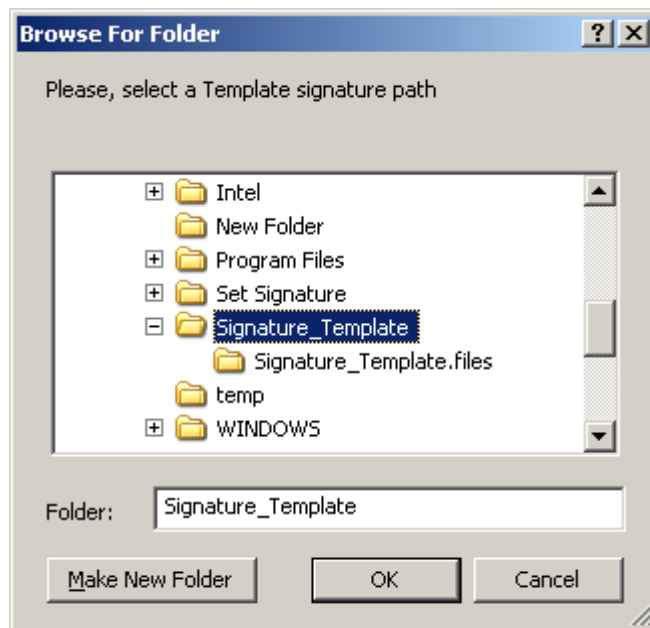
## Installation

The program should be installed on each client station.

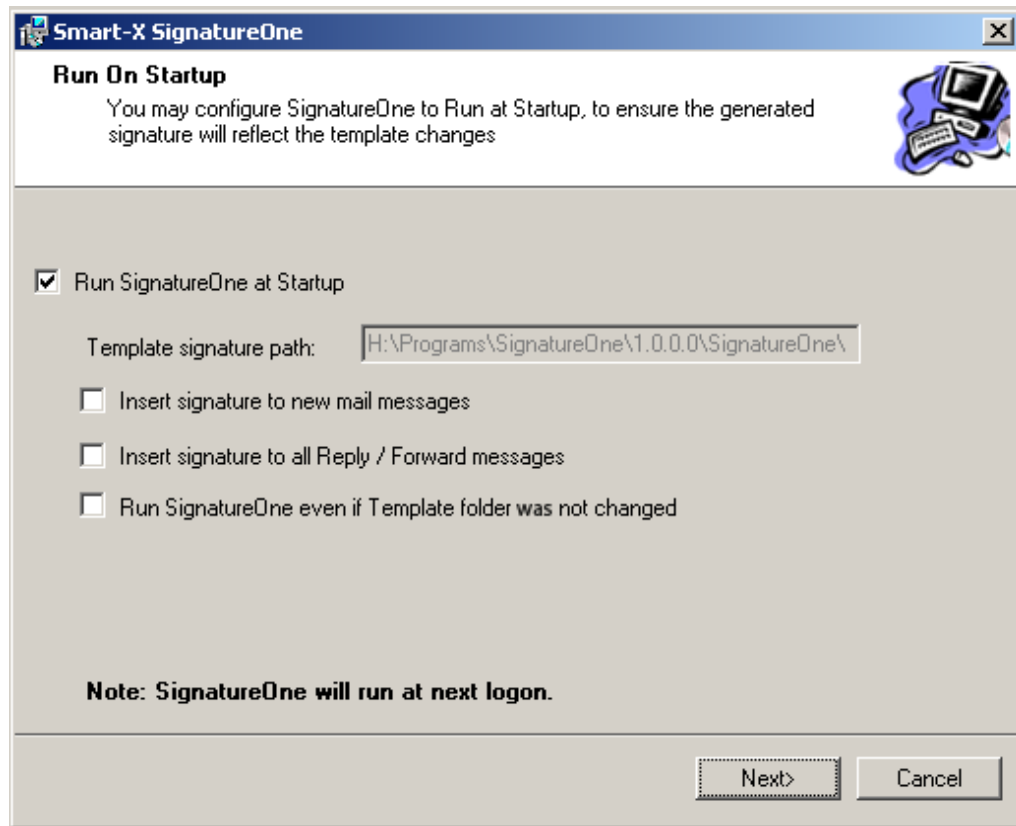
### To install SignatureOne:

1. Double click the installation msi file.
2. Read the program license conditions carefully.

3. Follow the Setup program instructions appearing on the screen until you receive the following window:



- Browse to choose the folder with the signature template files you have created. You can type the UNC path in the 'Folder' text box).
- In the "Run on Startup" window, set the parameters according to your preferences and click on 'Next'.



- i) Run SignatureOne at Startup.
- ii) **Insert Signature to new mail message** – will automatically add the signature to any new message created by the user.
- iii) **Insert Signature to all Reply/ Forward messages** – will automatically add the signature to every reply and/or forwarded message.
- iv) **Run SignatureOne even if template folder was not changed** – will synchronize the template with the user's signature on every log on.
- v) Click on 'Next'.

4. Click on Close to finish the installation.

## Installing SignatureOne in Silent mode:

When installing SignatureOne in silent mode, you may use command line arguments to define the parameters.

The command line syntax is as follows:

```
SignatureOne.msi /qn [AutoStart=yes] [path="<path for the template folder>"] [SetForNew=yes] [SetForReplyForward=yes] [Force=yes] [Hide=yes]
```

Note: All the parameters are optional.

AutoStart – setting this option to yes will set the application to run at Startup. Default value is NO.

Path – the path to the template signature folder. For default value see Remarks.

SetForNew - setting this option to YES will set the application to insert the signature to new mail messages. Default value is NO.

SetForReplyForward – setting this option to YES will set the application to insert the signature to reply / forward messages. Default value is NO.

Force – setting this option to YES will set the application to run even if the template signature had not changed. Default value is NO.

Hide – setting this option to YES will set the application to hide user interface when running. Default value is NO.

Example:

```
SignatureOne.msi /qn AutoStart=yes Path=\\server\share\template
```

Will set 'SignatureOne' to run at Startup and use the template from <\\server\share\template>

Note: The msi parameters will work only in silent mode installation.

## Running the application

1. Open command line, and navigate to folder where you installed the SignatureOne.
2. Type SignatureOne.exe /path:<The network path to the folder containing the template files>, and press 'Enter'.
3. Use the following syntax for the command line:

```
SignatureOne /Path=<The path to the template folder> [/Force]
[/SetForNew] [/SetForReply] [/Hide]
```

Syntax Term Description

Syntax Terms	Description
Path	Type the path to the template folder. If not specified, the program will search the NETLOGON\SignatureOne folder.
Force	Synchronizes the Template with the user's signature even if the template has not been changed.
SetForNew	Adds the signature to every new mail message.
SetForReply	Adds the signature to every Reply and Forward message.
Hide	Hides user interface. SignatureOne will notify the user in case of unsuccessful run. This option will hide the error window.

## Remarks

- If you already generated the signature, but the template files were not changed, nothing will happen.  
In that case, if the user's Active Directory values were changed, but the template stayed the same, you may force the application to regenerate the signature using the switch /force.

For example:

```
SignatureOne.exe /path:\\10.1.1.133\c$\Template /setfornew /force
```

- Running SignatureOne without the /path switch will result in getting the value of the template folder from the Registry.

The value for the Default path reside at:

```
HKLM\Software\Smart-X\Smart-X SignatureOne\DefaultPath
```

With initial value of "%logonserver%\NETLOGON\SignatureOne"

You may define a Default path for a specific user by creating the following value in the Registry:

```
HKCU\Software\Smart-X\Smart-X SignatureOne\DefaultPath
```

## Known Issues

- In case Outlook Message format is set to RTF and the User's properties in the Active Directory contains non English text, the signature will appear disrupted. In such a case use HTML or TXT message format and the signature will appear correctly.

## Active Directory Translation Table

Display Name	Properties
International ISDN Number (Others)	internationalISDNNumber
accountExpires	accountExpires
accountNameHistory	accountNameHistory
aCSPolicyName	aCSPolicyName
adminCount	adminCount
altSecurityIdentities	altSecurityIdentities
Assistant	assistant
badPasswordTime	badPasswordTime
badPwdCount	badPwdCount
City	l
codePage	codePage
Comment	comment
Company	company
controlAccessRights	controlAccessRights
Country	co
Country Abbreviation	c
countryCode	countryCode
dBCSPwd	dBCSPwd
defaultClassStore	defaultClassStore
Department	department
desktopProfile	desktopProfile
destinationIndicator	destinationIndicator
Division	division
dynamicLDAPServer	dynamicLDAPServer
E-Mail Address	mail
E-Mail Address (Others)	otherMailbox
Employee ID	employeeID
Fax Number	facsimileTelephoneNumber
Fax Number (Others)	otherFacsimileTelephoneNumber

Display Name	Properties
First Name	givenName
garbageCollPeriod	garbageCollPeriod
Generational Suffix	generationQualifier
groupMembershipSAM	groupMembershipSAM
groupPriority	groupPriority
groupsToIgnore	groupsToIgnore
Home Address	homePostalAddress
Home Drive	homeDrive
Home Folder	homeDirectory
Home Phone	homePhone
Home Phone (Others)	otherHomePhone
Initials	initials
International ISDN Number	primaryInternationalISDNNumber
IP Phone Number	ipPhone
IP Phone Number (Others)	otherIpPhone
Job Title	title
lastLogoff	lastLogoff
lastLogon	lastLogon
legacyExchangeDN	legacyExchangeDN
ImPwdHistory	ImPwdHistory
localeID	localeID
lockoutTime	lockoutTime
Logon Name	userPrincipalName
Logon Name (pre-Windows 2000)	sAMAccountName
Logon Workstations	userWorkstations
logonCount	logonCount
logonHours	logonHours
logonWorkstation	logonWorkstation
Manager	manager
maxStorage	maxStorage
mhsORAddress	mhsORAddress
Middle Name	middleName

Display Name	Properties
Mobile Number	mobile
Mobile Number (Others)	otherMobile
mS-DS-CreatorSID	mS-DS-CreatorSID
mSMQDigests	mSMQDigests
mSMQDigestsMig	mSMQDigestsMig
mSMQSignCertificates	mSMQSignCertificates
mSMQSignCertificatesMig	mSMQSignCertificatesMig
msNPAllowDialin	msNPAllowDialin
msNPCallingStationID	msNPCallingStationID
msNPSavedCallingStationID	msNPSavedCallingStationID
msRADIUSCallbackNumber	msRADIUSCallbackNumber
msRADIUSFramedIPAddress	msRADIUSFramedIPAddress
msRADIUSFramedRoute	msRADIUSFramedRoute
msRADIUSServiceType	msRADIUSServiceType
msRASSavedCallbackNumber	msRASSavedCallbackNumber
msRASSavedFramedIPAddress	msRASSavedFramedIPAddress
msRASSavedFramedRoute	msRASSavedFramedRoute
Name	cn
networkAddress	networkAddress
Notes	info
ntPwdHistory	ntPwdHistory
nTSecurityDescriptor	nTSecurityDescriptor
o	o
objectSid	objectSid
Office Location	physicalDeliveryOfficeName
operatorCount	operatorCount
otherLoginWorkstations	otherLoginWorkstations
ou	ou
Pager Number	pager
Pager Number (Others)	otherPager
Phone Number (Others)	otherTelephone
Post Office Box	postOfficeBox
postalAddress	postalAddress

Display Name	Properties
preferredDeliveryMethod	preferredDeliveryMethod
preferredOU	preferredOU
primaryGroupID	primaryGroupID
profilePath	profilePath
pwdLastSet	pwdLastSet
registeredAddress	registeredAddress
rid	rid
sAMAccountType	sAMAccountType
scriptPath	scriptPath
securityIdentifier	securityIdentifier
servicePrincipalName	servicePrincipalName
showInAddressBook	showInAddressBook
sIDHistory	sIDHistory
State/Province	st
street	street
Street Address	streetAddress
supplementalCredentials	supplementalCredentials
Telephone Number	telephoneNumber
teletexTerminalIdentifier	teletexTerminalIdentifier
Telex Number	primaryTelexNumber
Telex Number (Others)	telexNumber
terminalServer	terminalServer
textEncodedORAddress	textEncodedORAddress
thumbnailLogo	thumbnailLogo
thumbnailPhoto	thumbnailPhoto
Title	personalTitle
tokenGroups	tokenGroups
tokenGroupsGlobalAndUniversal	tokenGroupsGlobalAndUniversal
tokenGroupsNoGCAcceptable	tokenGroupsNoGCAcceptable
unicodePwd	unicodePwd
userAccountControl	userAccountControl
userCert	userCert
userCertificate	userCertificate

<b>Display Name</b>	<b>Properties</b>
userParameters	userParameters
userSharedFolder	userSharedFolder
userSharedFolderOther	userSharedFolderOther
userSMIMECertificate	userSMIMECertificate
x121Address	x121Address
ZIP/Postal Code	postalCode