

Smart-[X](#) Software Solutions

# **AppLocker User guide**

---

## Table of content:

<b>WELCOME</b>	<b>3</b>
<b>FEATURES AND CAPABILITIES</b>	<b>4</b>
<b>MORE SYSTEM MANAGEMENT TOOLS</b>	<b>5</b>
<b>REQUIREMENTS</b>	<b>7</b>
<b>REQUIREMENT</b>	<b>7</b>
<b>LICENSING AND INSTALLATION</b>	<b>7</b>
<b>LICENSING</b>	<b>7</b>
<b>INSTALLATION</b>	<b>7</b>
<b>TECHNICAL DETAILS</b>	<b>8</b>
<b>OPERATING APLOCKER</b>	<b>9</b>
<b>APPLICATION LIST</b>	<b>9</b>
ADD APPLICATION TO LIST	10
DELETE APPLICATION FROM LIST	10
EDIT APPLICATION LIST	10
<b>LOCKING APPLICATIONS</b>	<b>11</b>
UNLOCKING APPLICATIONS	11



## Welcome

Welcome to Smart-X.

Thank you for choosing AppLocker, one of the top tools developed by Smart-X Software Solutions expert team in an effort to optimize your everyday work. AppLocker helps you manage your system efficiently, effortlessly and productively.

This chapter describes the features and capabilities of AppLocker, and lists additional tools in the same field that can help optimize your work environment.

For more tools, click on the link to visit our website at [www.smart-x.com](http://www.smart-x.com).

### **This Chapter Contains:**

- Features and Capabilities.
- More System Management tools.

## **Features and Capabilities**

A number of the AppLocker advantages are as follows:

- Easily and instantly locks access to applications in any environment.
- Secures and enhances performance at Terminal Server and workstations by preventing execution to chosen applications.
- Prevents access to all applications by executable file.

## More System Management Tools

### GPHideDrive

- Extends the "Hide these specified drives in my computer", and the "Prevent access to drives from my computer" Group Policy options to include additional drive letters.
- Enables hiding more drives than default administrative templates.

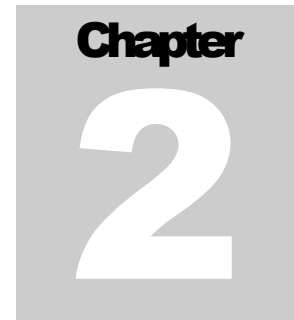
### Duplicate SIDs Monitor (DSM)

Monitors your network for duplicate SIDs computers and easily resolve it from your own workstation.

Using computer images for OS deployment? Technicians forgot to run SYSPREP / NEWSID? You probably have hundreds of duplicate SID computers in your network!

Duplicate SID computers is a major security risk and additionally might cause all kind of issues when working with third party products such as Anti Virus, Deployment systems and other system products.

Duplicate SID Monitor (DSM) is a revolutionary product which constantly monitors your network to find computers with duplicate SIDs. The information is stored locally and enables administrators to query for duplicate SID computers and resolve it remotely by a single click.



## **Working with AppLocker**

This chapter provides explicit instructions on how to apply AppLocker.

After reading the content carefully and following the prescribed steps you will find that AppLocker is simple to operate.

### **This Chapter Contains:**

- I: Requirements.
- II: Licensing and installation.
- III: Technical Details.
- IV: How to Operate Applocker.

## Requirements

### Requirement

Fits Windows 2K, Windows XP, Windows 2003 and Windows 2008

## Licensing and installation

### Licensing

AppLocker is a Beta freeware. Notwithstanding, it is recommended to read the EULA for information concerning program restrictions and obligations.

### Installation

AppLocker does not use components that are not included in the operating system and therefore does not actually need to be installed.

If AppLocker is used on a single machine, simply install it on that machine and use the desktop icon for configuration.

If AppLocker is intended for multiple machines, it should be installed on one machine, then the target folder is to be copied to a shared location and the executable file should be run from that location. By doing so, AppLocker does not have to be installed on each machine individually.

To install Applocker from a downloaded file:

1. Double click the installation file.
2. Read the program license conditions carefully.
3. Choose the directory where you wish to install Applocker.

4. Follow the instructions by the Setup program displayed on the screen until you receive the message "Smart-x Applocker has been successfully installed".
5. A desktop icon of the Applocker will be placed on the desktop and in the start menu.

## **Technical Details**

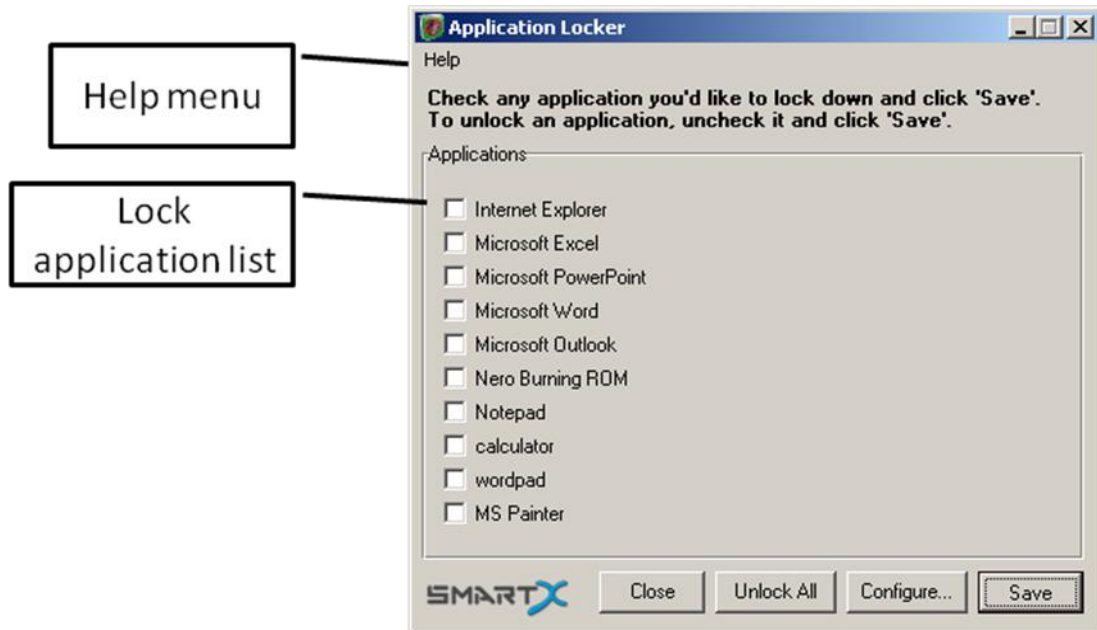
Preconfigured by an Administrator, and facilitated by a process named 'Black List', AppLocker prevents execution of undesired processes.

In contrast to other methods of execution prevention, AppLocker does not lock applications by image checksum, certificates, or other airtight methods. Therefore, the lockup is not hermetic. The main goal of AppLocker is to complement Group Policy by locking certain applications by process name.

Once an application is locked by AppLocker, a user can execute the locked process name on that machine until an Administrator unlocks the application using AppLocker.

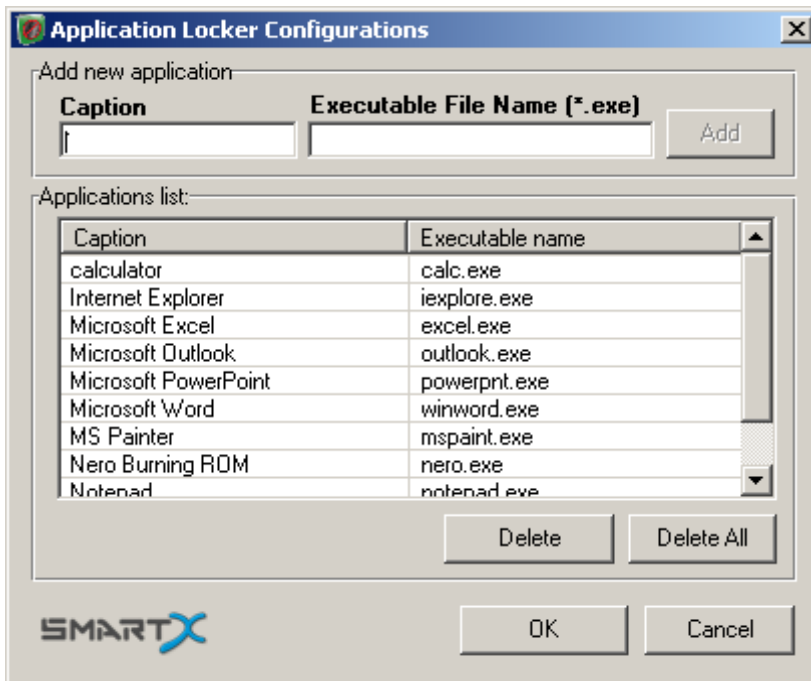
The configuration of AppLocker is very quick and easy. AppLocker does not include any Agent or service, and does not need to be installed on the target machine. You can execute AppLocker directly from a shared directory and simply lock an application!

## Operating AppLocker

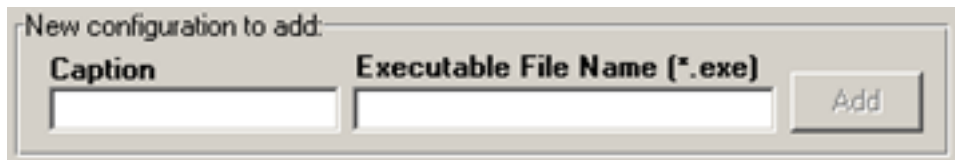


## Application list

Click on the 'Configure...' button to open the configuration window.





## Add Application to List



New configuration to add:

Caption	Executable File Name (*.exe)	
<input type="text"/>	<input type="text"/>	<input type="button" value="Add"/>

-   
Type the caption you want displayed on the 'Lock application list'.
-   
Type the programs executable file name.
- Click on 'Add'.
- Click 'OK' to return to main window.

## Delete application from list

- Click on the application you want removed from list.
- Click on 'Delete'
- Click 'OK' to return to main window.

You may also click on 'Delete all' to clear the entire application list.

## Edit application list

To edit the caption of an existing program on the list do as follows:

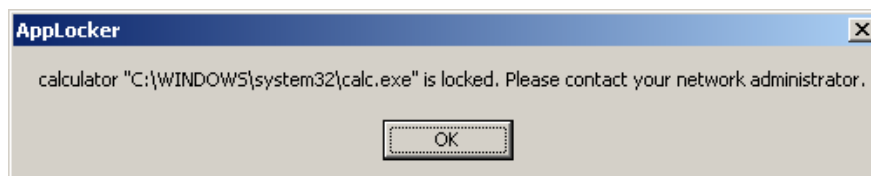
- Double click the applications caption.
- Change the caption and click on 'Enter'.
- Click 'OK' to return to main window.

## Locking Applications

After configuring the 'Lock applications list' simply check the applications to be locked and click on the 'Save' button.



Whenever the user operates a locked application the following message will appear:



## Unlocking Applications

To unlock an application simply uncheck the application from the list and click on 'Save'.

To unlock all applications, simply click on the 'Unlock all' button (This may be useful when the configuration file -which is installed with the exe file of Applocker – is deleted or damaged.)

Clicking on the 'Unlock all' button will reset locked applications and enable users to use the applications.